

Write your name here

Surname

Other names

Centre Number

Candidate Number

Edexcel GCSE

Geography B

Unit 1: Dynamic Planet

Higher Tier

Monday 14 June 2010 – Morning

Time: 1 hour

Paper Reference

5GB1H/01

You do not need any other materials.

Total Marks

Instructions

- Use **black** ink or ball-point pen.
- **Fill in the boxes** at the top of this page with your name, centre number and candidate number.
- In Section **A**, answer **ALL** questions.
- In Section **B**, answer **either** question **5** or **6**.
- In Section **C**, answer **either** question **7** or **8**.
- Answer the questions in the spaces provided
– *there may be more space than you need.*

Information

- The total mark for this paper is 50.
- The marks for **each** question are shown in brackets
– *use this as a guide as to how much time to spend on each question.*
- Questions labelled with an **asterisk** (*) are ones where the quality of your written communication will be assessed
– *you should take particular care on these questions with your spelling, punctuation and grammar, as well as the clarity of expression.*

Advice

- Read each question carefully before you start to answer it.
- Keep an eye on the time.
- Check your answers if you have time at the end.

Turn over ►

H37088A

©2010 Edexcel Limited.

5/7/3/3



H 3 7 0 8 8 A 0 1 2 0

edexcel 
advancing learning, changing lives

SECTION A – INTRODUCTION TO THE DYNAMIC PLANET

Answer ALL questions.

Topic 1: Restless Earth

1 Study Figure 1.

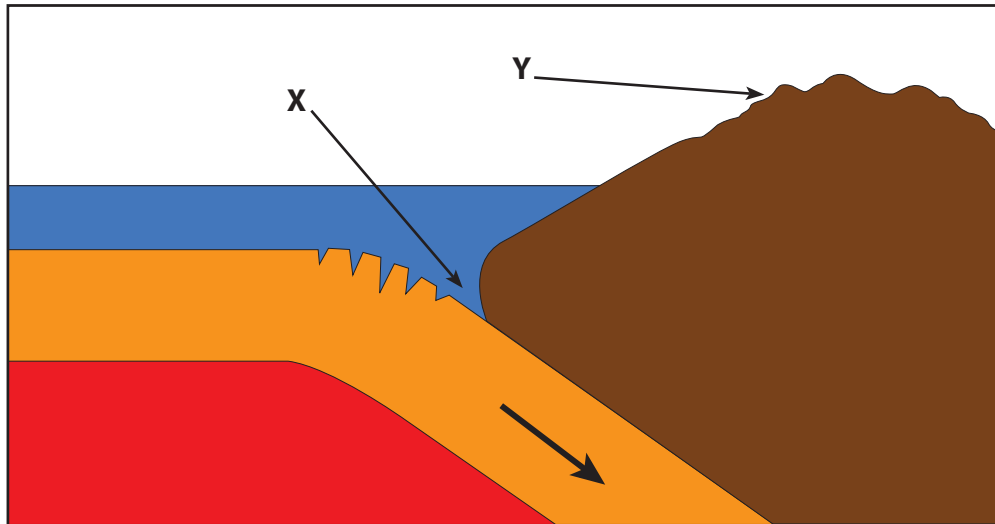


Figure 1 – A plate boundary

(a) Name the features shown at

(2)

X

Y

(b) Describe **one** way a region affected by earthquakes can prepare for this hazard.

(2)

.....

.....

.....

.....



(c) Using an example(s), describe the effects of earthquakes on people and property. (4)

.....

.....

.....

.....

.....

.....

.....

.....

.....

.....

(Total for Question 1 = 8 marks)



Topic 2: Climate and Change

2 Study Figure 2.



Figure 2 – Greenland’s melting ice sheet

(a) Using Figure 2, describe the changing melt pattern between 1992 and 2002.

(2)

(b) Describe **one** natural cause of climate change.

(2)



(c) Explain the possible economic impacts of climate change on a named country.

(4)

Named country

.....

.....

.....

.....

.....

.....

.....

.....

.....

.....

(Total for Question 2 = 8 marks)



Topic 3: Battle for the Biosphere

3 Study Figure 3.

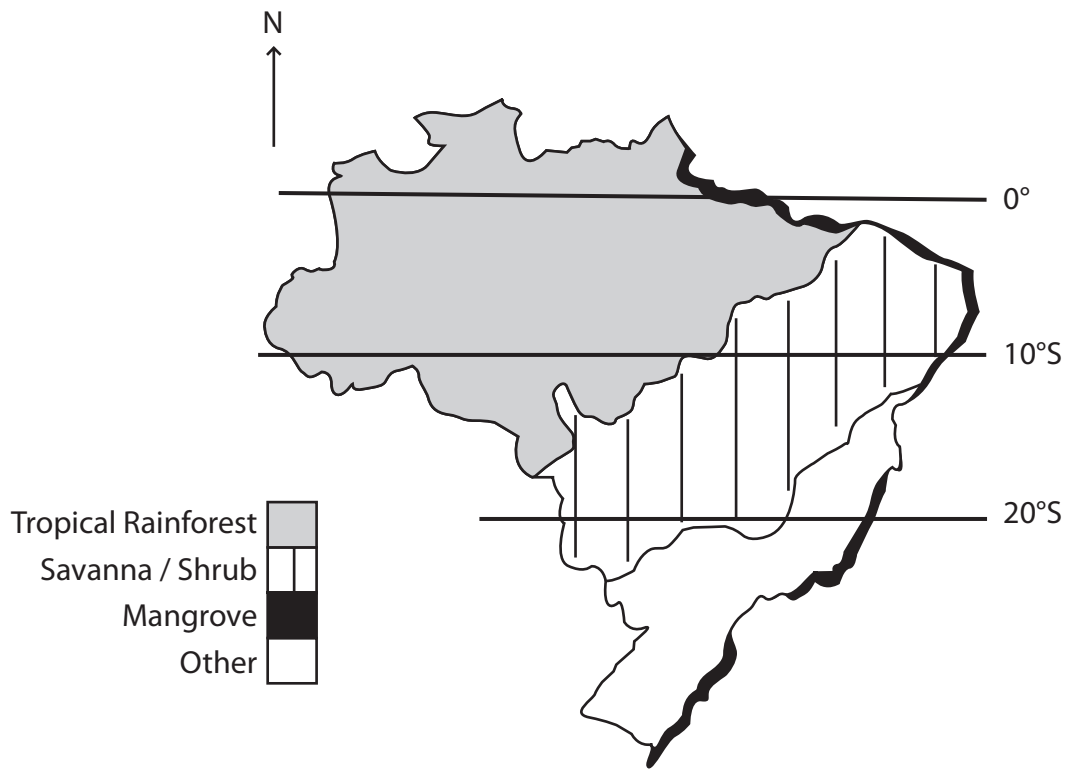


Figure 3 – Biome distribution in Brazil

(a) Describe the distribution of tropical rainforests in Brazil.

(2)

.....

.....

.....

.....

(b) Describe **one** way of conserving threatened environments.

(2)

.....

.....

.....

.....



(c) Using examples, describe how the biosphere provides people with a range of goods and services.

(4)

.....

.....

.....

.....

.....

.....

.....

.....

.....

.....

.....

.....

.....

.....

(Total for Question 3 = 8 marks)



Topic 4: Water World

4 Study Figure 4.

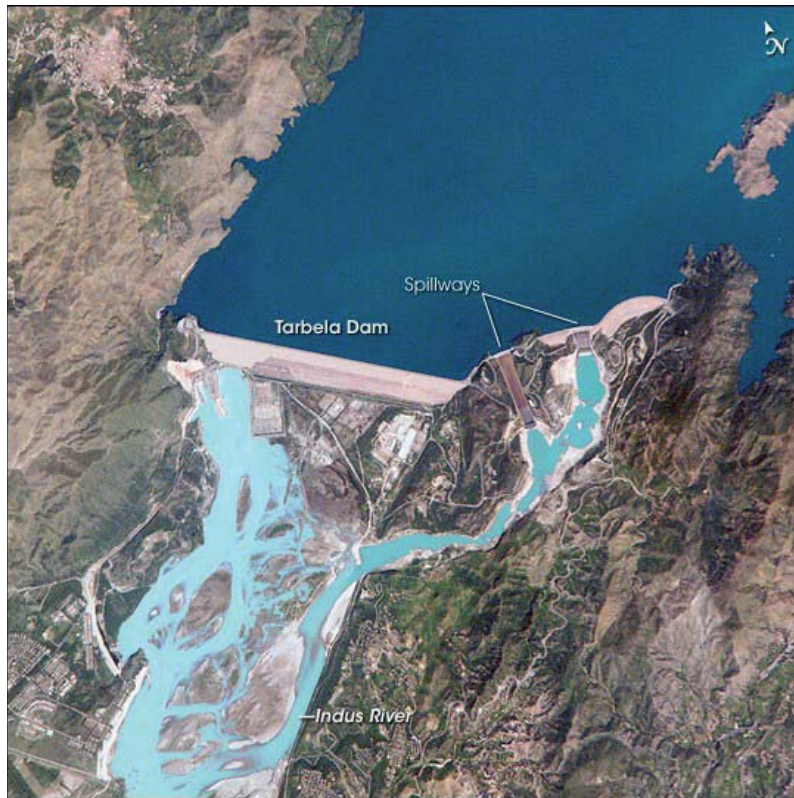


Figure 4 – A satellite image of the Tarbela Dam (Pakistan)

(a) Suggest **two** benefits of large scale water management projects such as the Tarbela Dam.

(2)

1

.....

2

.....



(b) Describe **one** impact of water shortages on people.

(2)

.....

.....

.....

.....

(c) Using an example(s), explain why small scale solutions to managing water supplies are often sustainable.

(4)

.....

.....

.....

.....

.....

.....

.....

.....

.....

.....

(Total for Question 4 = 8 marks)

TOTAL FOR SECTION A = 32 MARKS



SECTION B – SMALL SCALE DYNAMIC PLANET

Answer ONE question in this section.

Topic 5: Coastal Change and Conflict

If you answer Question 5 put a cross in this box .

5 Study Figure 5.



Figure 5 – Methods of coastal management

(a) Name the method of hard engineering shown at **A**.

(1)

(b) Name and describe **one** process of coastal erosion.

(2)

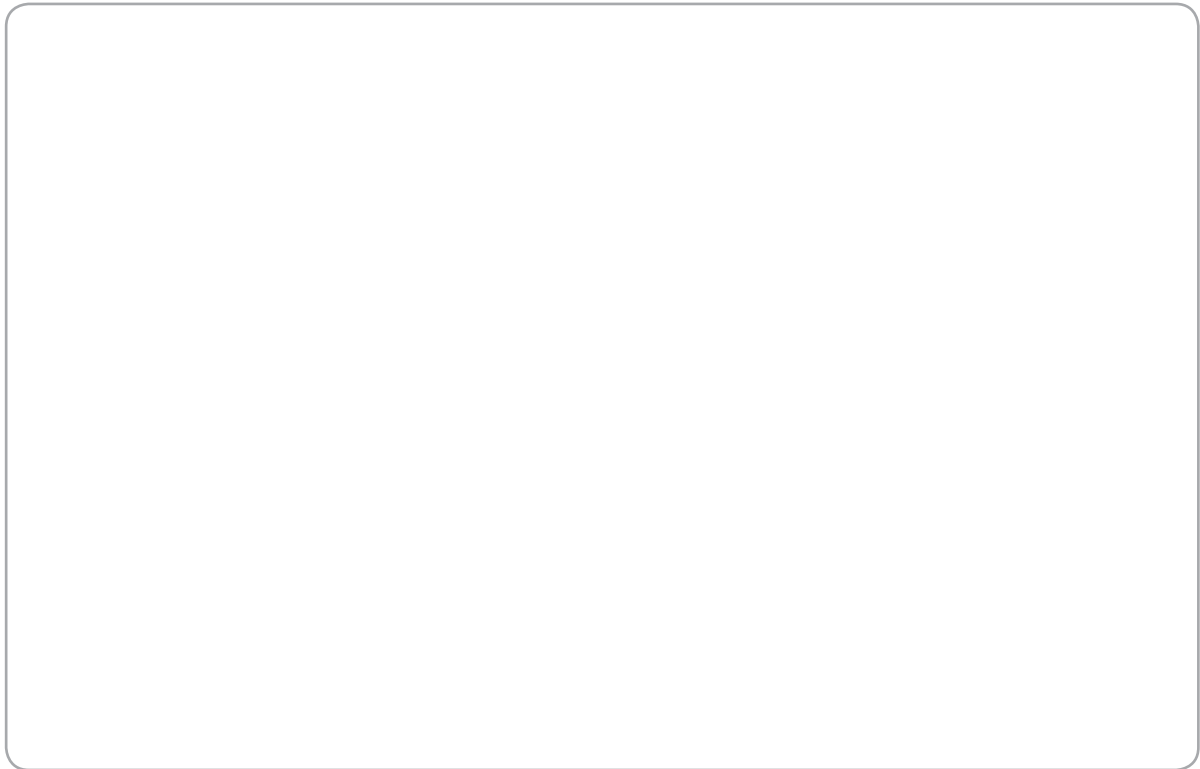
Named process:



* (c) Explain how a spit is formed.

You may draw a diagram(s) to help your answer.

(6)



.....

.....

.....

.....

.....

.....

.....

.....

.....

.....

.....

.....

.....

.....

.....

.....

.....

.....

.....

.....

.....

(Total for Question 5 = 9 marks)



Topic 6: River Processes and Pressures

If you answer Question 6 put a cross in this box .

6 Study Figure 6.



Figure 6 – Flood management: hard engineering

(a) Name the method of flood management shown in Figure 6.

(1)

(b) Name and describe **one** process of river erosion.

(2)

Named process:



* (c) Describe how the shape and characteristics of river channels change from source to mouth.

You may draw a diagram(s) to help your answer.

(6)

.....

.....

.....

.....

.....

.....

.....

.....

.....

.....

.....

.....

.....

.....

.....

.....

.....

(Total for Question 6 = 9 marks)

TOTAL FOR SECTION B = 9 MARKS



SECTION C – LARGE SCALE DYNAMIC PLANET

Answer ONE question in this section.

Topic 7: Oceans on the Edge

If you answer Question 7 put a cross in this box .

7 Study Figure 7.

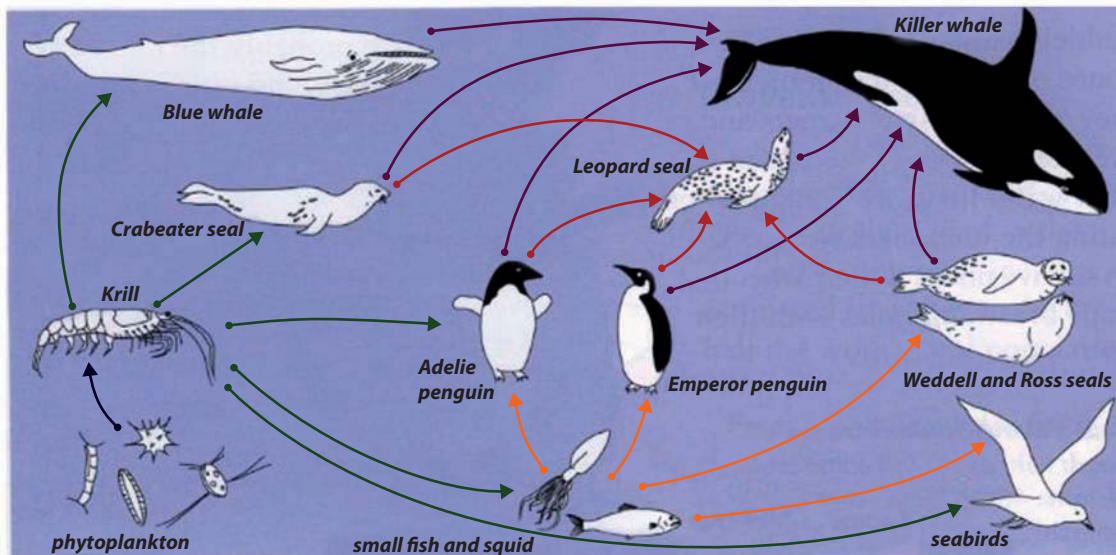


Figure 7 – A food web

(a) Explain why krill are so important to this ecosystem.

(2)

.....

.....

.....

.....

(b) The krill population is declining rapidly.

Suggest a reason for this sudden decline.

(1)

.....

.....



* (c) Using examples, explain how global actions are attempting to create sustainable marine ecosystems.

(6)

.....

.....

.....

.....

.....

.....

.....

.....

.....

.....

.....

.....

.....

.....

.....

.....

.....

.....

.....

.....

.....

.....

(Total for Question 7 = 9 marks)



Topic 8: Extreme Environments

If you answer Question 8 put a cross in this box .

Chosen extreme climate: Polar or Hot arid

8 Study Figure 8.

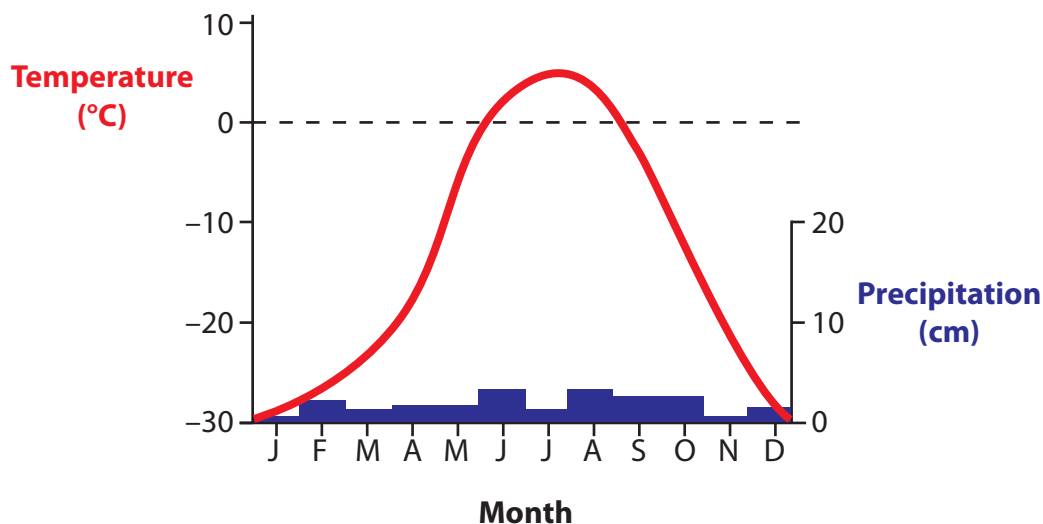


Figure 8 – Climate graph for Barrow in Alaska

(a) What is the annual temperature range in Barrow?

(1)

(b) Describe **one** problem faced by people living in areas of extreme climate.

(2)



*(c) For a named hot arid or polar region, explain how life is changing for its people. (6)

Name of region:

.....

.....

.....

.....

.....

.....

.....

.....

.....

.....

.....

.....

.....

(Total for Question 8 = 9 marks)

TOTAL FOR SECTION C = 9 MARKS
TOTAL FOR PAPER = 50 MARKS



BLANK PAGE



BLANK PAGE



BLANK PAGE

