

Write your name here

Surname

Other names

Centre Number

Candidate Number

Edexcel GCSE

Geography B

Unit 1: Dynamic Planet

Foundation Tier

Monday 13 June 2011 – Morning

Time: 1 hour

Paper Reference

5GB1F/01

You do not need any other materials.

Total Marks

Instructions

- Use **black** ink or ball-point pen.
- **Fill in the boxes** at the top of this page with your name, centre number and candidate number.
- In Section **A**, answer **ALL** questions.
- In Section **B**, answer **either** question **5** or **6**.
- In Section **C**, answer **either** question **7** or **8**.
- Answer the questions in the spaces provided
– *there may be more space than you need.*

Information

- The total mark for this paper is 50.
- The marks for **each** question are shown in brackets
– *use this as a guide as to how much time to spend on each question.*
- Questions labelled with an **asterisk** (*) are ones where the quality of your written communication will be assessed
– *you should take particular care on these questions with your spelling, punctuation and grammar, as well as the clarity of expression.*

Advice

- Read each question carefully before you start to answer it.
- Keep an eye on the time.
- Check your answers if you have time at the end.

Turn over ►

P38868A

©2011 Edexcel Limited.

5/7/4/2



P 3 8 8 6 8 A 0 1 2 0

edexcel 
advancing learning, changing lives

SECTION A – INTRODUCTION TO THE DYNAMIC PLANET

Answer ALL questions.

Topic 1: Restless Earth

1 Look at Figure 1.

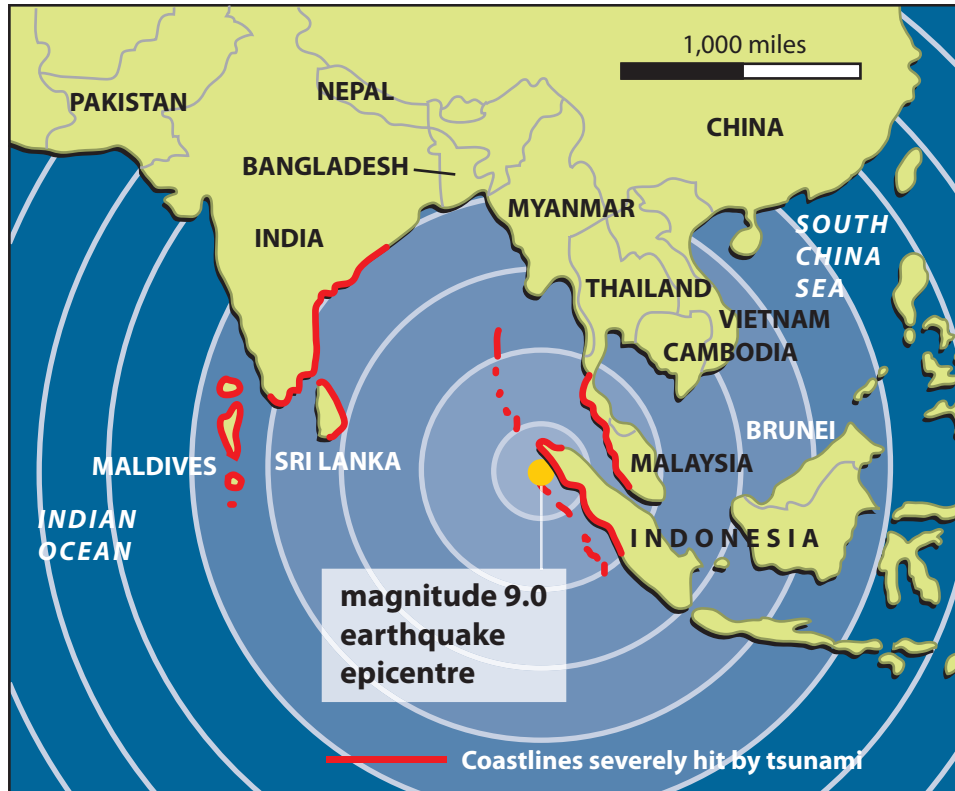


Figure 1 – Countries affected by the Boxing Day earthquake of 2004

(a) (i) How powerful was the earthquake?

(1)

(ii) Name the natural hazard caused by this earthquake.

(1)



(b) Complete the sentences below using **two** of the following words.

mantle convection crust rotating core

(2)

The solid outer layer of the earth is known as the
This outer layer is made up of large sections called plates.

..... currents in the mantle cause these plates to move, creating earthquakes.

(c) Describe **two** ways in which a region affected by volcanic eruptions or earthquakes can prepare for this hazard.

(4)

1

.....

.....

.....

2

.....

.....

.....

(Total for Question 1 = 8 marks)



Topic 2: Climate and Change

2 Look at Figure 2a.

Greenhouse gas	Estimated contribution of human activity to climate change
Carbon dioxide (CO ₂) from fossil fuels	58%
CO ₂ from deforestation	16%
Other	1%
Nitrous oxide	8%
Methane	17%

Figure 2a – Estimated contribution of human activity to climate change

(a) Using Figure 2a, label columns A and D on the graph below (Figure 2b).

(2)

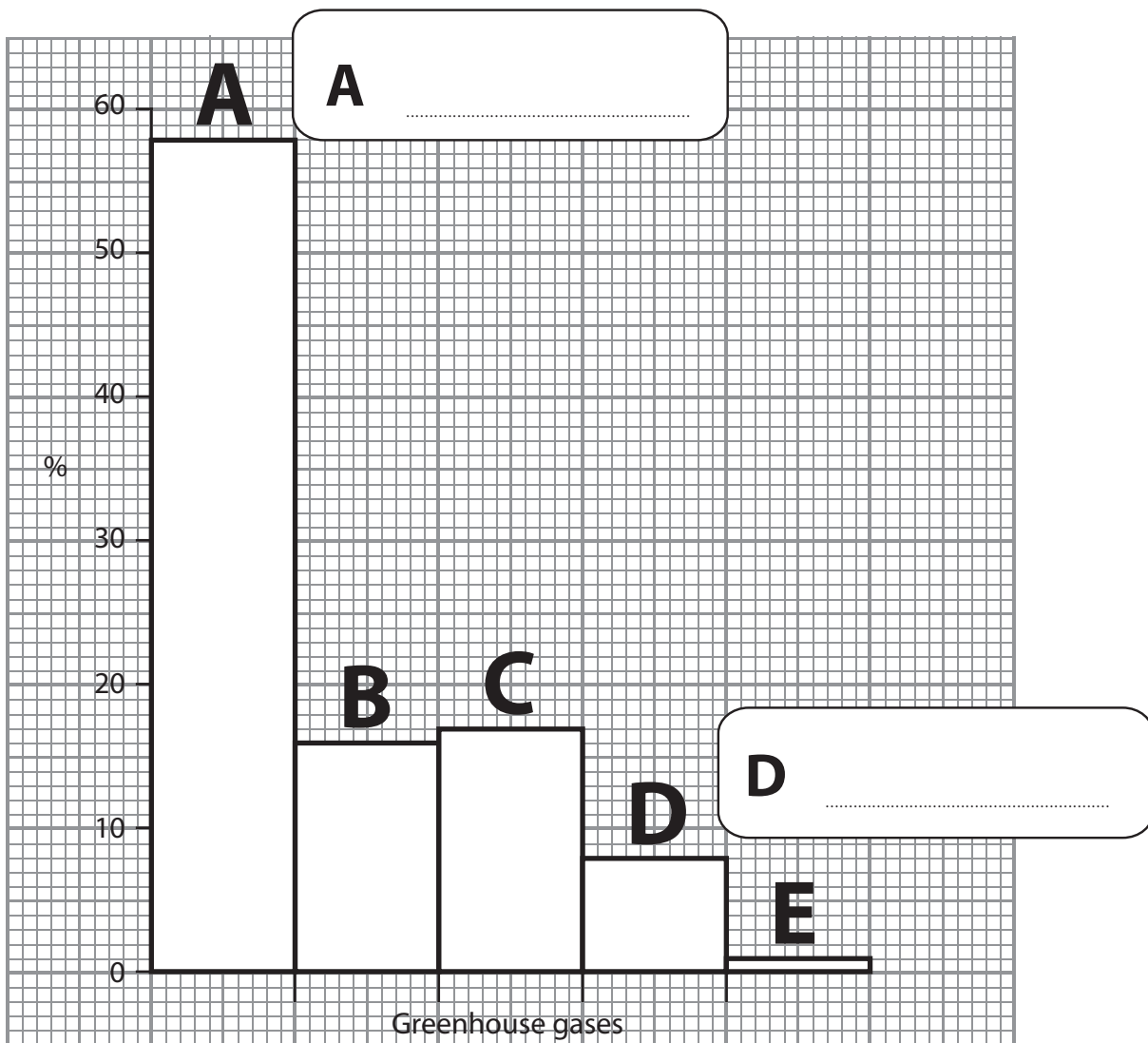


Figure 2b



(b) Give **two** reasons why the amount of CO₂ from using fossil fuels has increased in recent years.

(2)

1

.....

2

.....

(c) For a named country, suggest **two** possible impacts of higher global temperatures.

(4)

Named country:

1

.....

.....

.....

.....

2

.....

.....

.....

.....

(Total for Question 2 = 8 marks)



Topic 3: Battle for the Biosphere

3 Look at Figure 3.



Figure 3 – Satellite Images showing deforestation in Rondonia, Brazil

- (a) (i) Which **one** of the following statements best describes what has happened between 1992 and 2004 in Figure 3? (1)
- A** there was no change between 1992 and 2004
 - B** many trees were planted between 1992 and 2004
 - C** many trees were cut down between 1992 and 2004
 - D** all the trees were cut down by 2004
- (ii) Give **one** reason why deforestation is occurring in countries such as Brazil. (1)



(b) Name **one** product (goods) and **one** service provided by the biosphere.

(2)

Product

Service

(c) Describe **two** management measures that can be used to conserve the biosphere.

(4)

1

2

(Total for Question 3 = 8 marks)



Topic 4: Water World

4 Look at Figure 4.

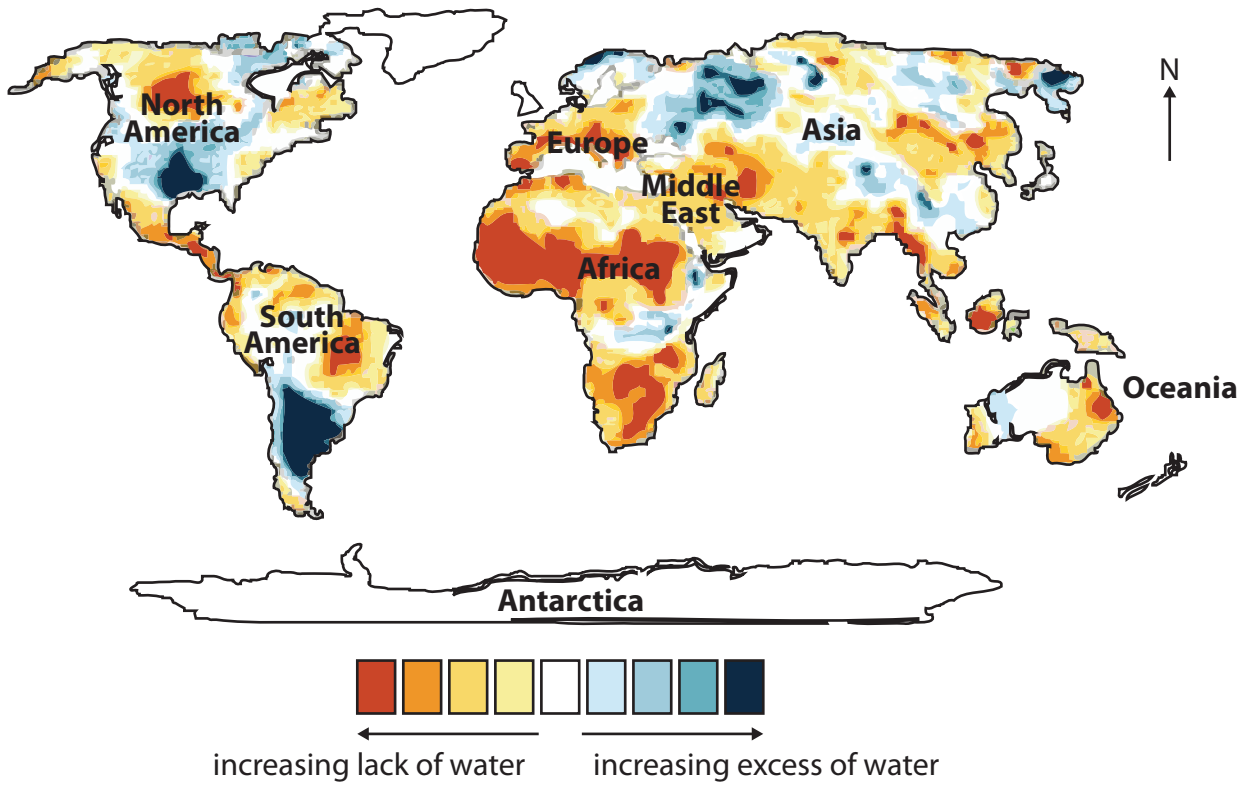


Figure 4 – A global water availability map

(a) (i) Which continent is most affected by a lack of water?

(1)

- A South America
- B North America
- C Asia
- D Africa



SECTION B – SMALL-SCALE DYNAMIC PLANET

Answer ONE question in this section.

Topic 5: Coastal Change and Conflict

If you answer Question 5 put a cross in this box .

5 Look at Figure 5.

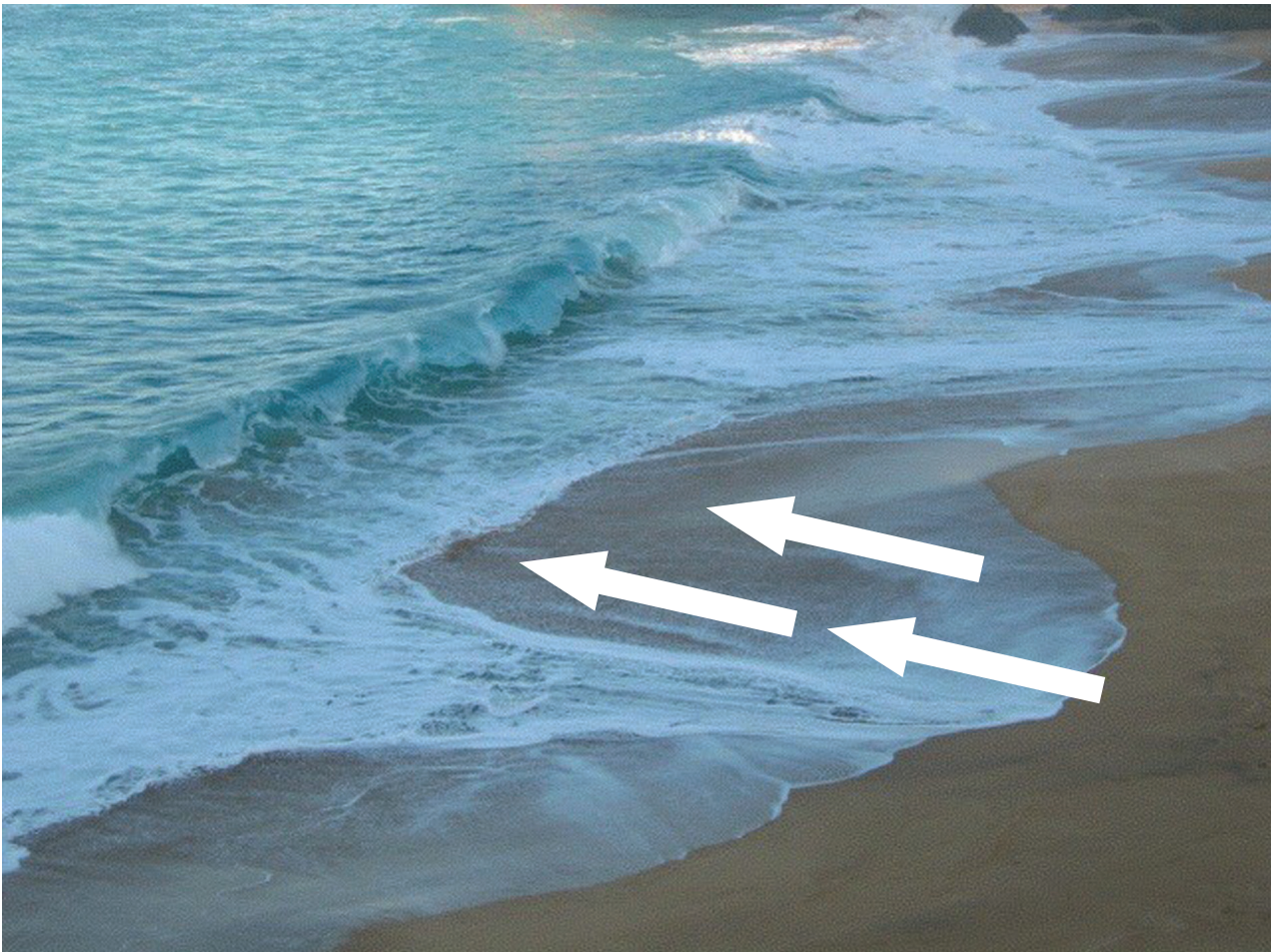


Figure 5 – Destructive Waves

(a) What is shown by the arrows on Figure 5?

(1)

- A** Swash
- B** Breaking wave
- C** Deposition
- D** Backwash



(b) Name **two** processes of coastal erosion.

(2)

1

.....

2

.....

*(c) Explain how the rate of coastal retreat (erosion) can be managed.

(6)

.....

.....

.....

.....

.....

.....

.....

.....

.....

.....

.....

(Total for Question 5 = 9 marks)



Topic 6: River Processes and Pressures

If you answer Question 6 put a cross in this box .

6 Look at Figure 6.



Figure 6 – A photograph of a lowland river

(a) Identify the feature shown in the box on Figure 6.

(1)

- A** meander
- B** levee
- C** ox-bow lake
- D** waterfall



SECTION C – LARGE-SCALE DYNAMIC PLANET

Answer ONE question in this section.

Topic 7: Oceans on the Edge

If you answer Question 7 put a cross in this box .

7 Look at Figure 7.

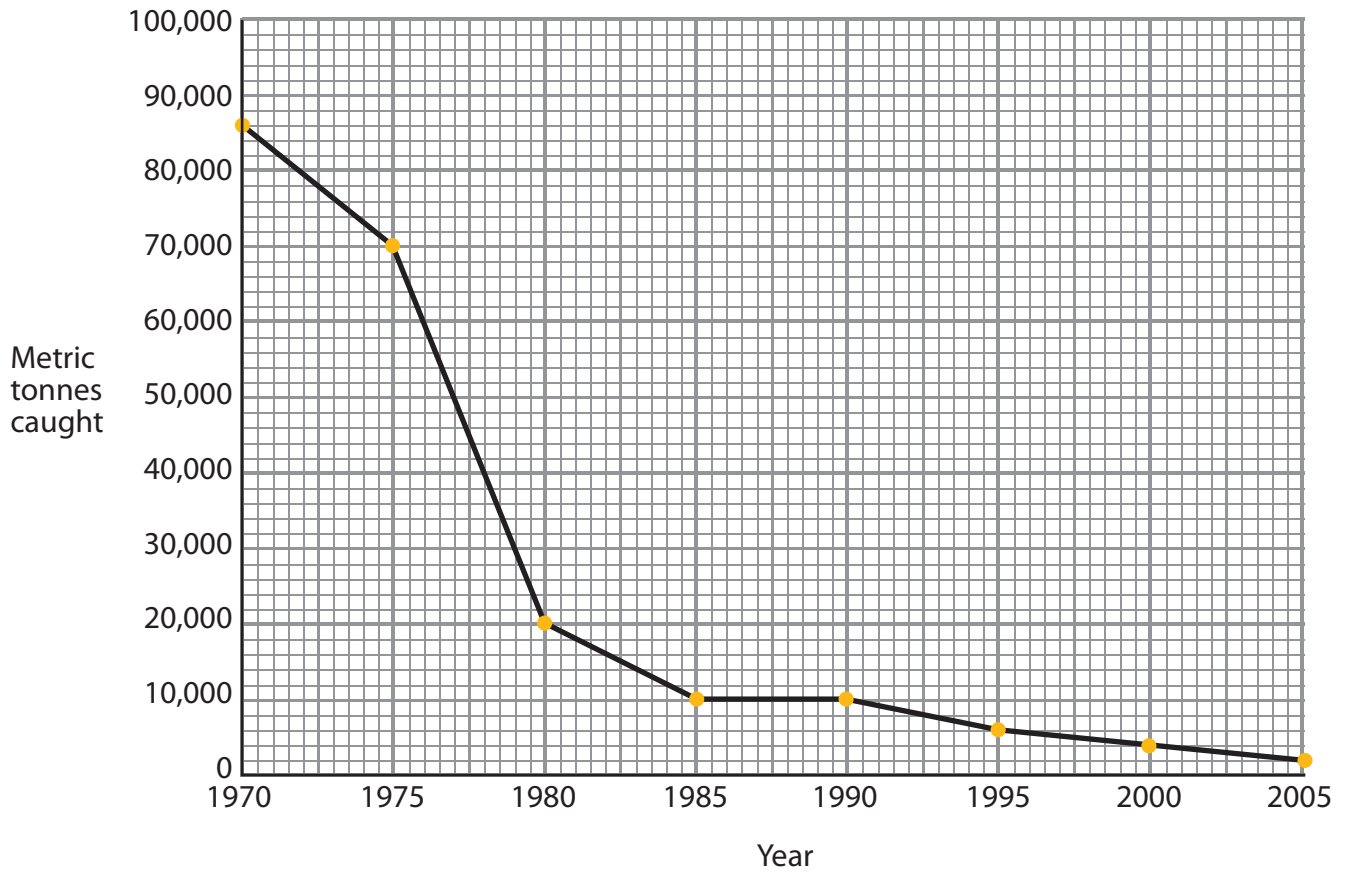


Figure 7 – Tonnes of bluefin tuna caught, 1970 to 2005

(a) In which period did the amount of bluefin tuna caught fall most?

(1)

- A 1970 – 1975
- B 1975 – 1980
- C 1980 – 1985
- D 1985 – 1990



Topic 8: Extreme Climates

If you answer Question 8 put a cross in this box .

8 Look at Figure 8.

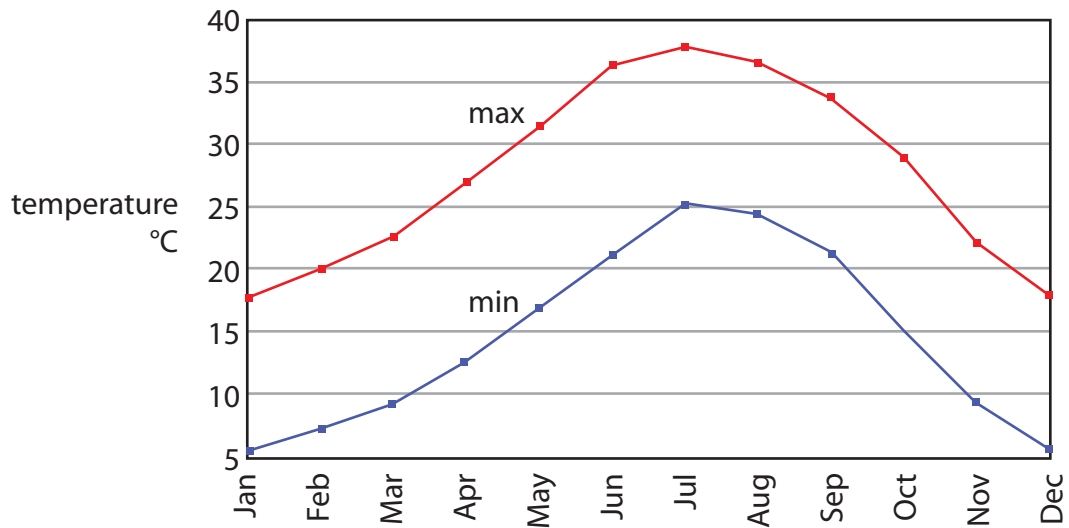


Figure 8 – Maximum and minimum temperature graph, Phoenix (Arizona, USA)

(a) What is the difference between maximum and minimum temperatures in July?

(1)

- A 10°C
- B 13°C
- C 23°C
- D 30°C



BLANK PAGE



BLANK PAGE



BLANK PAGE

