

Write your name here

Surname

Other names

Centre Number

Candidate Number

Edexcel GCSE

Geography B

Unit 1: Dynamic Planet

Higher Tier

Monday 13 June 2011 - Morning

Time: 1 hour

Paper Reference

5GB1H/01

You do not need any other materials.

Total Marks

Instructions

- Use **black** ink or ball-point pen.
- **Fill in the boxes** at the top of this page with your name, centre number and candidate number.
- In Section **A**, answer **ALL** questions.
- In Section **B**, answer **either** question **5** or **6**.
- In Section **C**, answer **either** question **7** or **8**.
- Answer the questions in the spaces provided
– *there may be more space than you need.*

Information

- The total mark for this paper is 50.
- The marks for **each** question are shown in brackets
– *use this as a guide as to how much time to spend on each question.*
- Questions labelled with an **asterisk** (*) are ones where the quality of your written communication will be assessed
– *you should take particular care on these questions with your spelling, punctuation and grammar, as well as the clarity of expression.*

Advice

- Read each question carefully before you start to answer it.
- Keep an eye on the time.
- Check your answers if you have time at the end.

Turn over ►

P38869A

©2011 Edexcel Limited.

5/7/4



P 3 8 8 6 9 A 0 1 2 0

edexcel 
advancing learning, changing lives

SECTION A – INTRODUCTION TO THE DYNAMIC PLANET

Answer ALL questions.

Topic 1: Restless Earth

1 Study Figure 1.

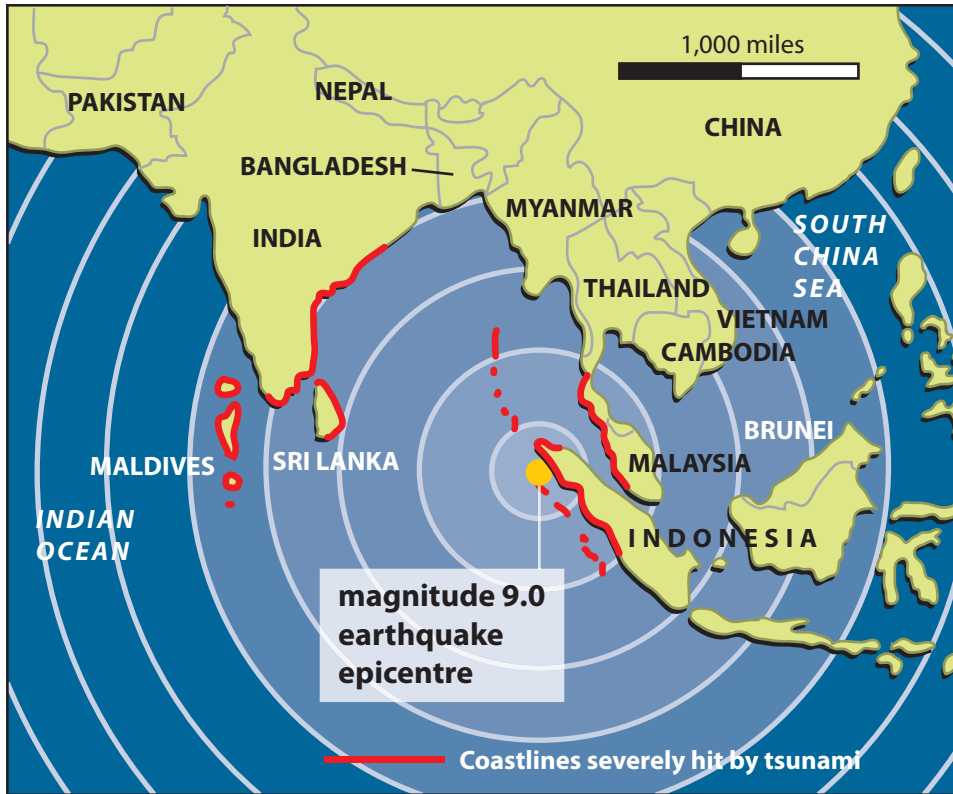


Figure 1 – Countries affected by the Boxing Day earthquake of 2004

(a) State **two** reasons why the Boxing Day earthquake had a severe effect on the countries in the region.

(2)

1

2



(b) Describe **one** way in which a region affected by volcanic eruptions can prepare for this hazard.

(2)

.....

.....

.....

.....

(c) Explain how volcanoes are formed on **either** constructive **or** destructive plate boundaries.

You may draw a diagram to help you.

(4)

Chosen type of plate boundary

.....

.....

.....

.....

.....

.....

.....

.....

.....

.....

(Total for Question 1 = 8 marks)



Topic 2: Climate and Change

2 Study Figure 2a

Greenhouse gas	Estimated contribution of human activity to climate change
Carbon dioxide (CO ₂) from fossil fuels	58%
CO ₂ from deforestation	16%
Other	1%
Nitrous oxide	8%
Methane	17%

Figure 2a – Estimated contribution of human activity to climate change

(a) Using Figure 2a, name gases **X** and **Y** in the key below (Figure 2b).

(2)

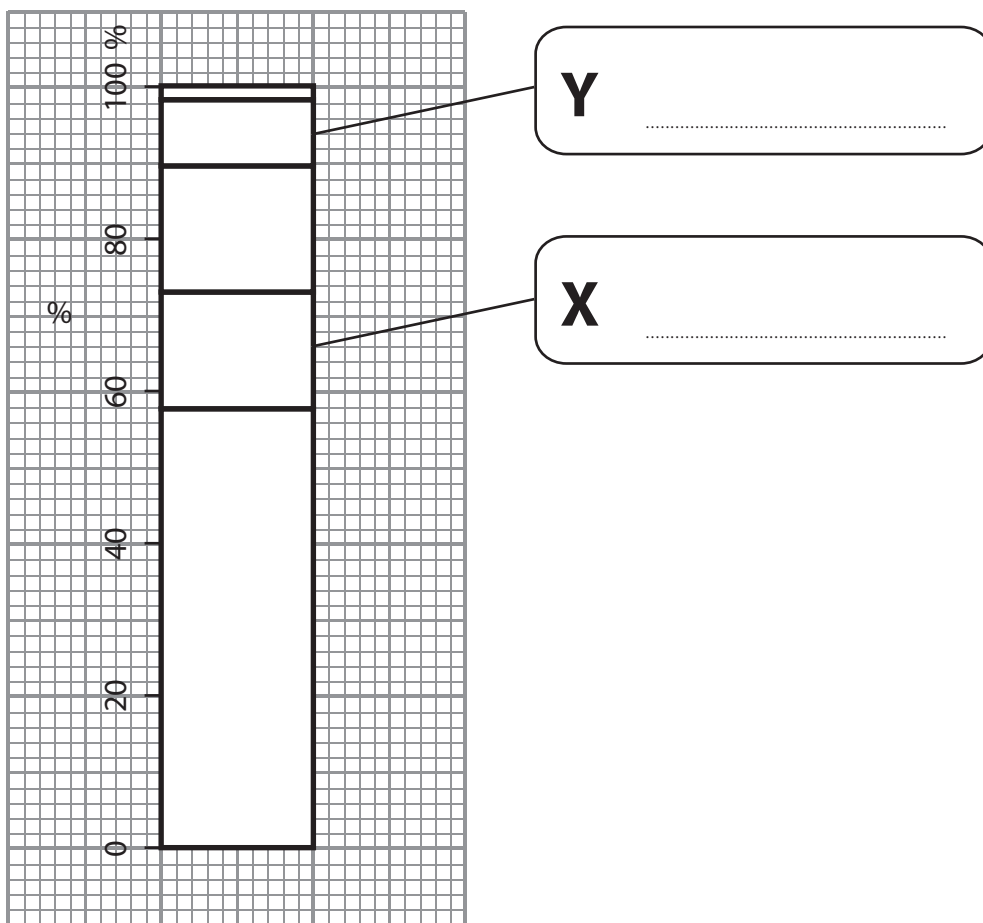


Figure 2b



(b) For a named country, suggest **one** possible impact of higher global temperatures. (2)

Named country

.....
.....
.....

(c) Describe how climate change in the past, such as the Little Ice Age, affected people and ecosystems. (4)

.....
.....
.....
.....
.....
.....
.....
.....

(Total for Question 2 = 8 marks)



Topic 3: Battle for the Biosphere

3 Study Figure 3.



Figure 3 – Satellite images showing deforestation in Rondonia, Brazil

(a) Describe the change in deforested areas between 1992 and 2004.

(2)

.....

.....

.....

.....

(b) Describe **one** management measure that can be used to conserve the biosphere.

(2)

.....

.....

.....

.....



(c) Explain how temperature and precipitation affect the distribution of global biomes.

(4)

.....

.....

.....

.....

.....

.....

.....

.....

.....

.....

.....

.....

.....

.....

.....

(Total for Question 3 = 8 marks)



Topic 4: Water World

4 Study Figure 4.

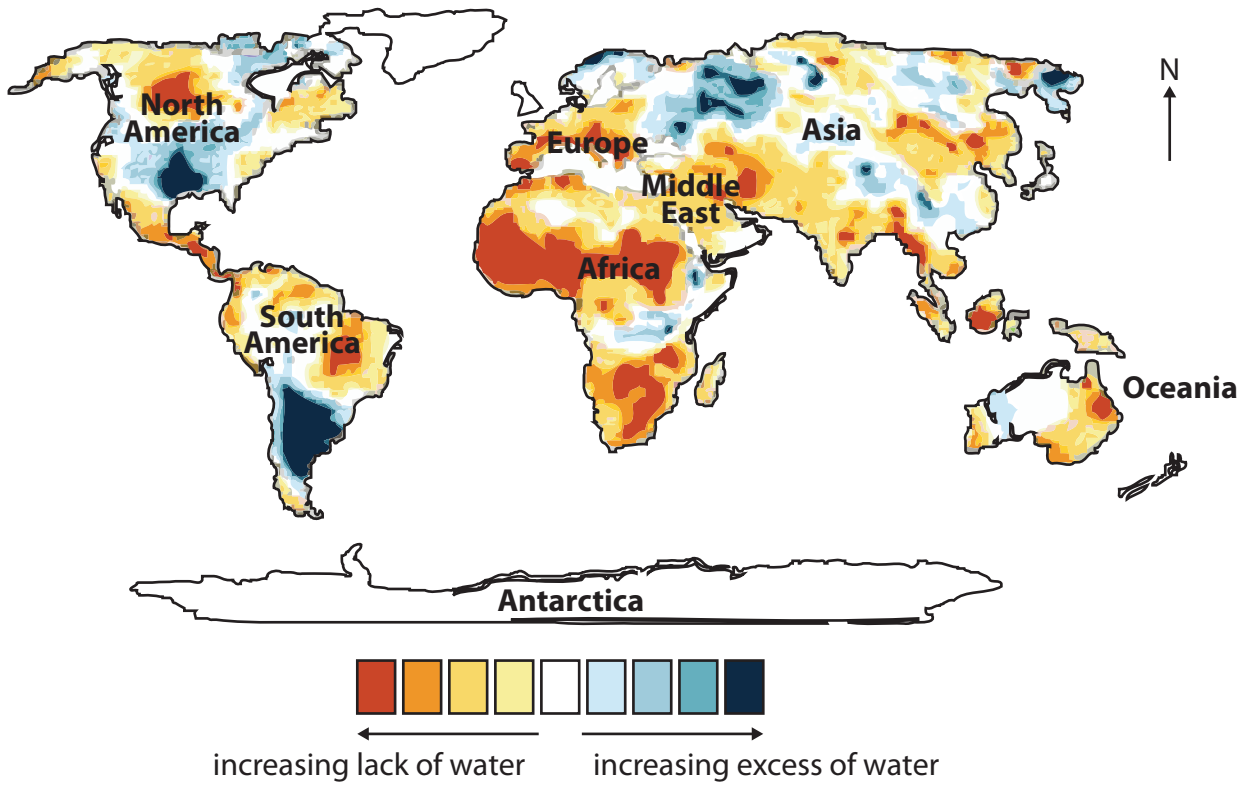


Figure 4 – A global water availability map

(a) Describe the pattern of water availability in South America.

(2)

.....

.....

.....

.....



(b) For a named water management project, describe ways it has benefited local people.

(2)

Named water management project:

.....

.....

.....

.....

.....

(c) Explain how water is transferred from the land to the atmosphere in the hydrological cycle.

(4)

.....

.....

.....

.....

.....

.....

.....

.....

.....

.....

(Total for Question 4 = 8 marks)

TOTAL FOR SECTION A = 32 MARKS



SECTION B – SMALL-SCALE DYNAMIC PLANET

Answer ONE question in this section.

Topic 5: Coastal Change and Conflict

If you answer Question 5 put a cross in this box .

5 Study Figure 5.

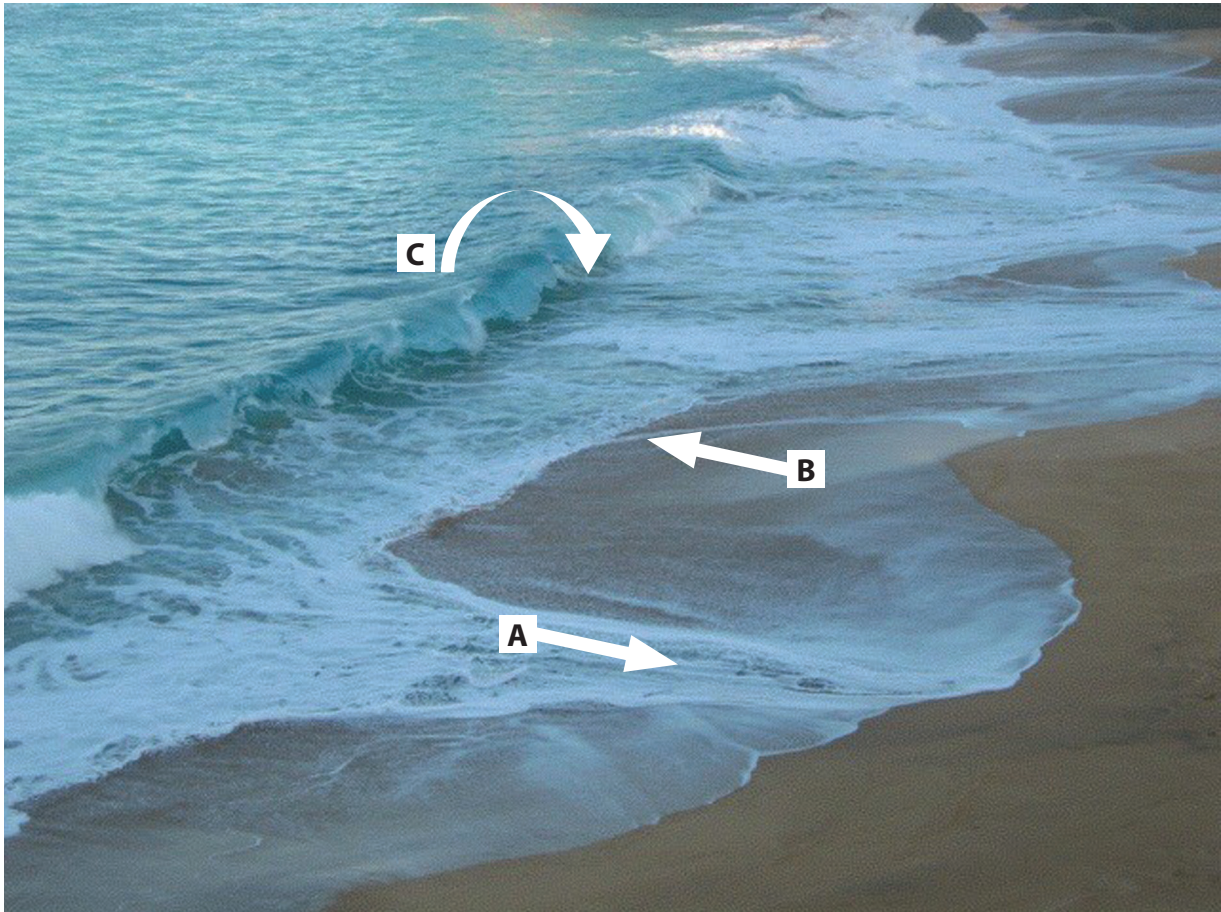


Figure 5 – Destructive Waves

(a) Name the **three** movements of water shown on Figure 5.

(3)

A

B

C



*(b) Explain how physical processes can cause coastal retreat.

(6)

.....

.....

.....

.....

.....

.....

.....

.....

.....

.....

.....

.....

.....

.....

.....

.....

.....

.....

.....

.....

.....

.....

.....

(Total for Question 5 = 9 marks)



Topic 6: River Processes and Pressures

If you answer Question 6 put a cross in this box .

6 Study Figure 6.

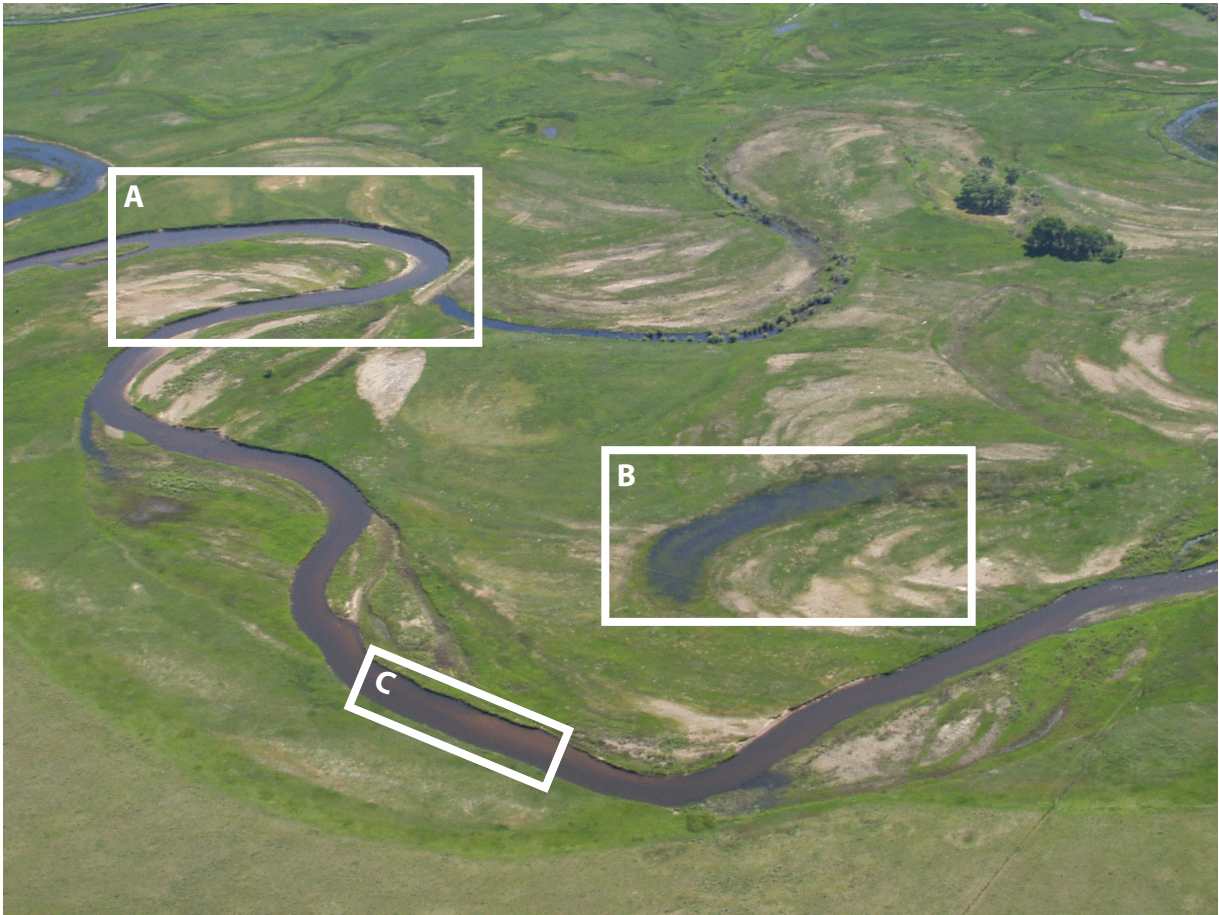


Figure 6 – A photograph of a lowland river

(a) Name the features identified in Figure 6.

(3)

A

B

C



*(b) Explain how land use change can increase the risk of river flooding.

(6)

Dotted lines for writing the answer.

(Total for Question 6 = 9 marks)

TOTAL FOR SECTION B = 9 MARKS



SECTION C – LARGE-SCALE DYNAMIC PLANET

Answer ONE question in this section.

Topic 7: Oceans on the Edge

If you answer Question 7 put a cross in this box .

7 Study Figure 7.

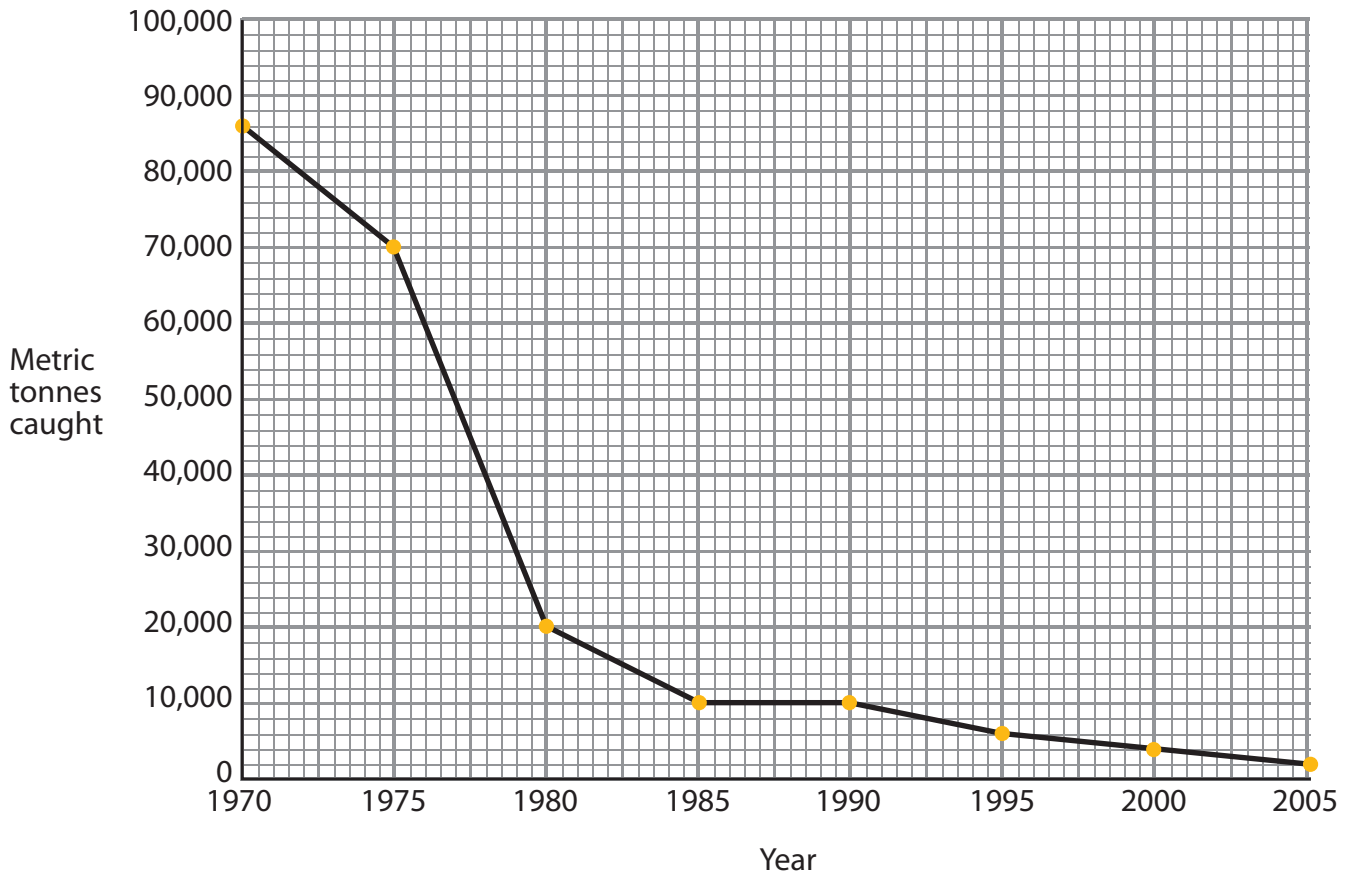


Figure 7 – Tonnes of bluefin tuna caught, 1970 to 2005

(a) Describe how the amount of bluefin tuna caught changed between 1970 and 2005.

(3)

.....

.....

.....

.....

.....

.....



*(b) Explain how climate change might add additional stress to marine ecosystems.

(6)

Dotted lines for writing.

(Total for Question 7 = 9 marks)



Topic 8: Extreme Climates

If you answer Question 8 put a cross in this box .

8 Study Figure 8.

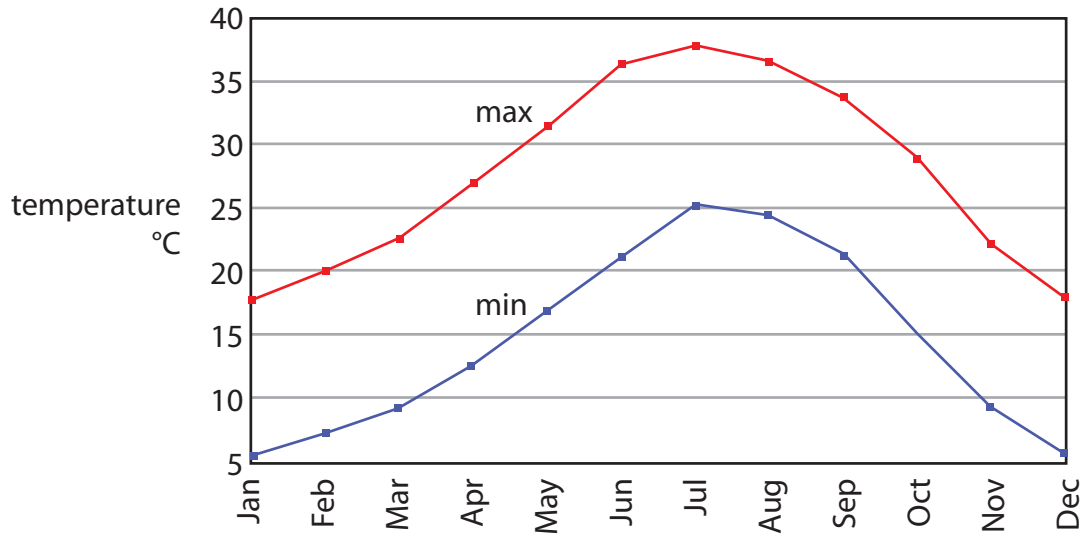


Figure 8 – Maximum and minimum temperature graph, Phoenix (Arizona, USA)

(a) Describe the pattern of the maximum and minimum temperatures.

(3)

.....

.....

.....

.....

.....

.....

.....



*(b) For **either** a hot arid **or** a polar region, explain how vegetation has adapted to this extreme climate.

(6)

Hot arid or polar region:

.....

.....

.....

.....

.....

.....

.....

.....

.....

.....

.....

.....

.....

.....

.....

.....

.....

.....

.....

.....

.....

.....

.....

(Total for Question 8 = 9 marks)

TOTAL FOR SECTION C = 9 MARKS
TOTAL FOR PAPER = 50 MARKS



BLANK PAGE



BLANK PAGE



BLANK PAGE

