

Write your name here

Surname

Other names

Centre Number

Candidate Number

Edexcel GCSE

Geography B

Unit 1: Dynamic Planet

Foundation Tier

Thursday 14 June 2012 – Morning
Time: 1 hour

Paper Reference

5GB1F/01

You do not need any other materials.

Total Marks

Instructions

- Use **black** ink or ball-point pen.
- **Fill in the boxes** at the top of this page with your name, centre number and candidate number.
- In Section **A**, answer **ALL** the questions.
- In Section **B**, answer **either** question **5** or **6**.
- In Section **C**, answer **either** question **7** or **8**.
- Answer the questions in the spaces provided
– *there may be more space than you need.*

Information

- The total mark for this paper is 50.
- The marks for **each** question are shown in brackets
– *use this as a guide as to how much time to spend on each question.*
- Questions labelled with an **asterisk** (*) are ones where the quality of your written communication will be assessed
– *you should take particular care on these questions with your spelling, punctuation and grammar, as well as the clarity of expression.*

Advice

- Read each question carefully before you start to answer it.
- Keep an eye on the time.
- Check your answers if you have time at the end.

Turn over ►

P39950RA

©2012 Pearson Education Ltd.

6/7/15



P 3 9 9 5 0 R A 0 1 2 0

PEARSON

SECTION A – INTRODUCTION TO THE DYNAMIC PLANET

Answer ALL questions.

Topic 1: Restless Earth

1 Look at Figure 1.



Figure 1 – Aerial photograph of a volcanic eruption

(a) Which feature of a volcanic eruption is shown at Z?

(1)

- A Lava Flow
- B Crater
- C Ash Cloud
- D Earthquake

(b) (i) State **one** immediate response to a volcanic eruption.

(1)



(ii) Outline **one** way buildings can be built to survive an earthquake.

(2)

.....

.....

.....

.....

(c) Describe **two** methods that can be used to predict when a volcano is likely to erupt.

(4)

1

.....

.....

.....

2

.....

.....

.....

(Total for Question 1 = 8 marks)



Topic 2: Climate and Change

2 Look at Figure 2.

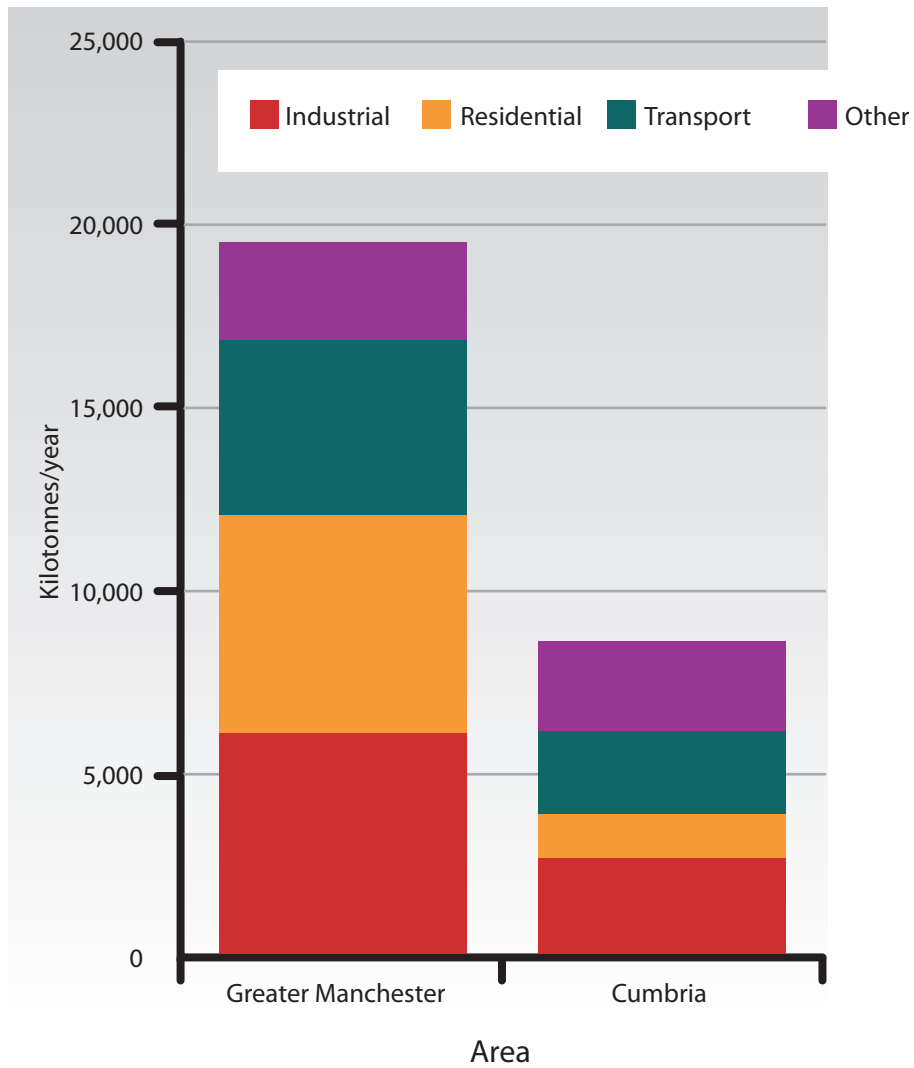


Figure 2 – Carbon dioxide emissions in selected areas of north-west England

(a) Which is the **smallest** source of carbon dioxide in Cumbria?

(1)

- A Industrial
- B Residential
- C Transport
- D Other



(b) Identify **one** greenhouse gas, **other** than carbon dioxide.

(1)

(c) Identify **two** types of evidence that can be used to show climate change is taking place.

(2)

1

2

(d) Describe **two** ways human activity can lead to climate change.

(4)

1

.....

.....

.....

2

.....

.....

.....

(Total for Question 2 = 8 marks)



Topic 3: Battle for the Biosphere

3 Look at Figure 3.

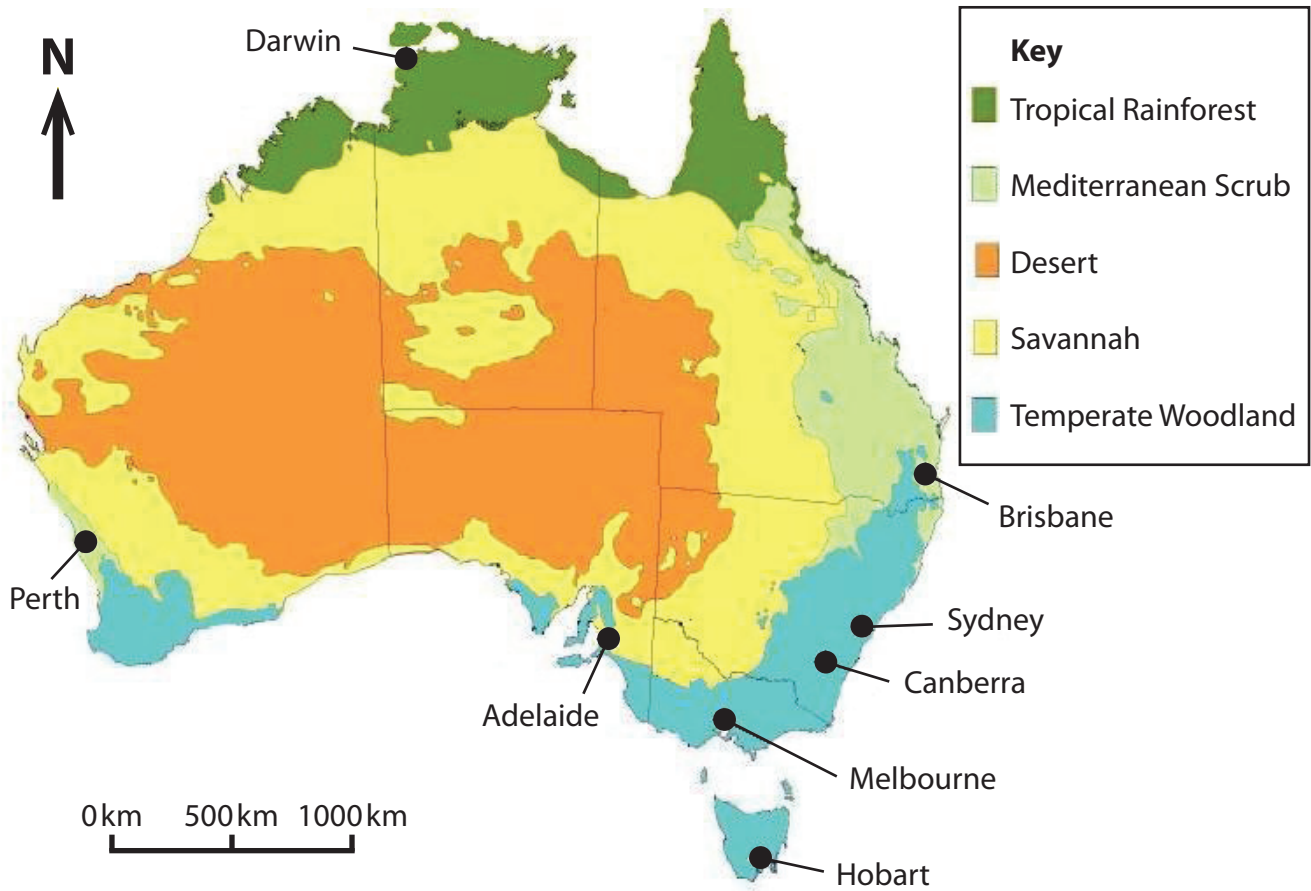


Figure 3 – Biome distribution in Australia

(a) (i) Name the biome in which Melbourne is situated.

(1)

(ii) Which **one** of the following statements is correct?

(1)

- A** Coastal regions are mainly desert
- B** The largest biome in Australia is Mediterranean scrub
- C** The centre of Australia is mainly temperate woodland
- D** Tropical rainforest is only found in the north of Australia



(b) Name **two** goods provided by the biosphere.

(2)

1

2

(c) For a named biome, describe **two** ways it has been damaged by human activity.

(4)

Named biome:

1

.....

.....

.....

2

.....

.....

.....

(Total for Question 3 = 8 marks)



Topic 4: Water World

4 Look at Figure 4.

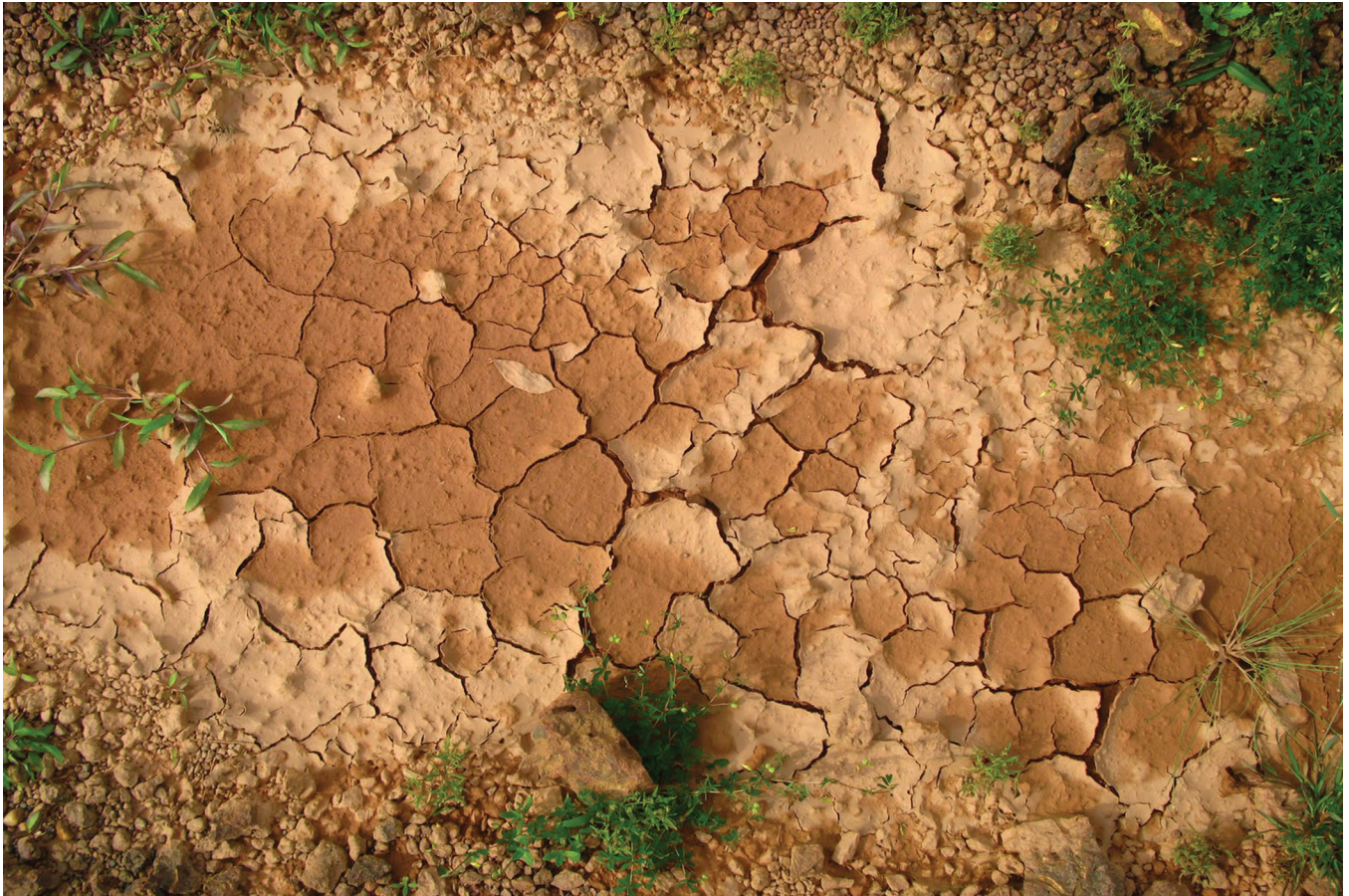


Figure 4 – Photograph showing the impact of a lack of water supply

(a) Complete the sentence below using **two** of the following words.

(2)

drought ground sea flooding

A lack of water supply may lead to and crop failure.

Wells can be dug to take water from the



(b) Outline **one** benefit of using intermediate technology to improve water supply. (2)

.....

.....

.....

.....

(c) Describe **two** human activities that can lead to a reduction in water quality. (4)

1

.....

.....

.....

2

.....

.....

.....

(Total for Question 4 = 8 marks)

TOTAL FOR SECTION A = 32 MARKS



SECTION B – SMALL-SCALE DYNAMIC PLANET

Answer ONE question in this section.

Topic 5: Coastal Change and Conflict

If you answer Question 5 put a cross in this box .

5 Look at Figure 5.

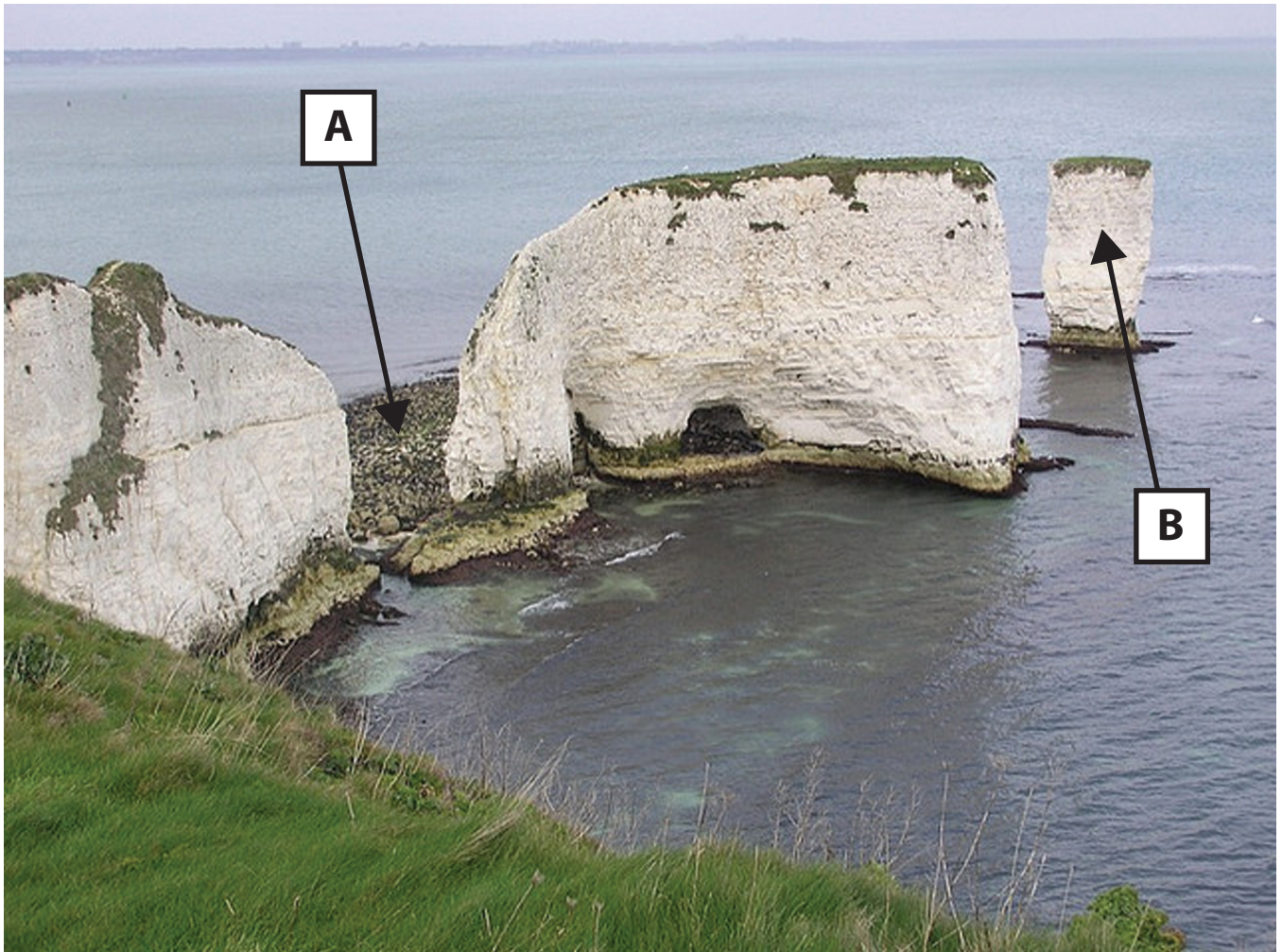


Figure 5 – Photograph of coastal landforms

(a) Name the coastal landforms **A** and **B**.

Choose from the four landforms listed below.

Spit Stack Blow Hole Wave-Cut Platform

(2)

A

B



(b) Name **one** process of coastal erosion.

(1)

* (c) Using examples, describe the costs and benefits of using hard engineering to manage coastal retreat.

(6)

(Total for Question 5 = 9 marks)



Topic 6: River Processes and Pressures

If you answer Question 6 put a cross in this box .

6 Look at Figure 6.



Figure 6 – Photograph of ‘High Force’ waterfall

(a) Name the features shown at **A** and **B**.

Choose from the four features listed below.

Plunge Pool Spur Meander Bed load

(2)

A

B



(b) Name **one** process of river erosion.

(1)

* (c) For a flood you have studied, describe the effects of the flood on the local area.

(6)

Named flood

(Total for Question 6 = 9 marks)

TOTAL FOR SECTION B = 9 MARKS



SECTION C – LARGE-SCALE DYNAMIC PLANET

Answer ONE question in this section.

Topic 7: Oceans on the Edge

If you answer Question 7 put a cross in this box .

7 Look at Figure 7.

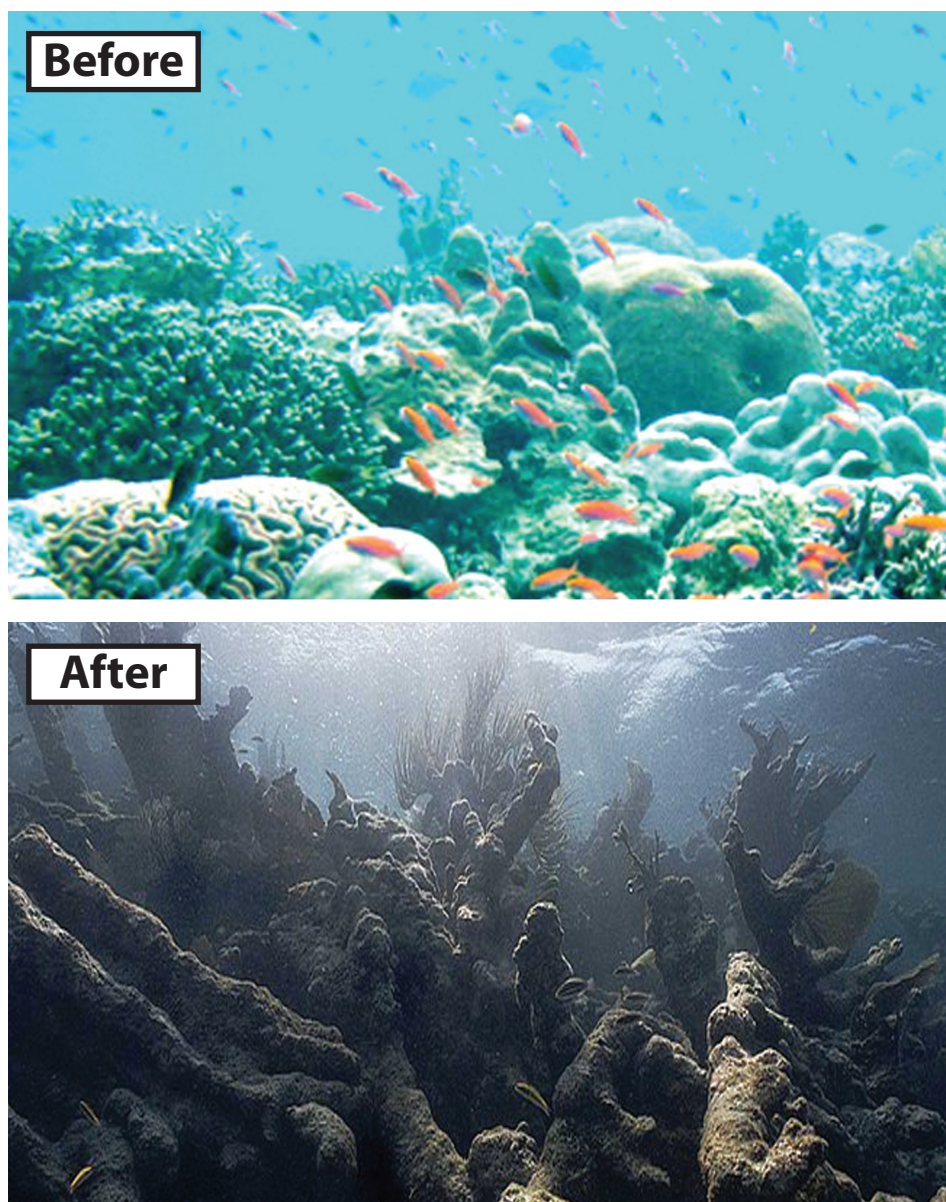


Figure 7 – The impacts of pollution on a coral reef

(a) Identify **one** impact caused by the pollution.

(1)

.....

.....



(b) Suggest **two** sources of marine pollution.

(2)

1

2

*(c) Using examples, explain how marine ecosystems can be sustainably managed.

(6)

.....

.....

.....

.....

.....

.....

.....

.....

.....

.....

.....

.....

.....

.....

.....

.....

.....

.....

.....

.....

.....

.....

.....

(Total for Question 7 = 9 marks)



Topic 8: Extreme Climates

If you answer Question 8 put a cross in this box .

8 Look at Figure 8.



Figure 8 – Buildings adapted to cope with extreme climates

(a) For **either** the hot arid **or** the polar climate, identify **two** ways the building has been designed to cope with the extreme climate.

(2)

Hot Arid or Polar:

1

.....

2

.....

(b) Give **one** reason why people often find it difficult to live in an area that has an extreme climate.

(1)

.....

.....



*(c) For a named area with **either** a hot arid **or** a polar climate, explain how local people have protected their environment.

(6)

Named area:

.....

.....

.....

.....

.....

.....

.....

.....

.....

.....

.....

(Total for Question 8 = 9 marks)

TOTAL FOR SECTION C = 9 MARKS
TOTAL FOR PAPER = 50 MARKS



BLANK PAGE



BLANK PAGE



BLANK PAGE

Every effort has been made to contact copyright holders to obtain their permission for the use of copyright material. Edexcel, a product of Pearson Education Ltd. will, if notified, be happy to rectify any errors or omission and include any such rectifications in future editions.

