

Write your name here

Surname

Other names

Centre Number

Candidate Number

**Edexcel GCSE**

# Geography B

## Unit 1: Dynamic Planet

**Higher Tier**

Thursday 14 June 2012 – Morning  
**Time: 1 hour**

Paper Reference  
**5GB1H/01**

**You do not need any other materials.**

Total Marks

### Instructions

- Use **black** ink or ball-point pen.
- **Fill in the boxes** at the top of this page with your name, centre number and candidate number.
- In Section **A**, answer **ALL** the questions.
- In Section **B**, answer **either** question **5** or **6**.
- In Section **C**, answer **either** question **7** or **8**.
- Answer the questions in the spaces provided  
– *there may be more space than you need.*

### Information

- The total mark for this paper is 50.
- The marks for **each** question are shown in brackets  
– *use this as a guide as to how much time to spend on each question.*
- Questions labelled with an **asterisk** (\*) are ones where the quality of your written communication will be assessed  
– *you should take particular care on these questions with your spelling, punctuation and grammar, as well as the clarity of expression.*

### Advice

- Read each question carefully before you start to answer it.
- Keep an eye on the time.
- Check your answers if you have time at the end.

Turn over ►

P39951RA

©2012 Pearson Education Ltd.

6/7/15/5



**PEARSON**

SECTION A – INTRODUCTION TO THE DYNAMIC PLANET

Answer ALL questions.

Topic 1: Restless Earth

1 Study Figure 1.



Figure 1 – Aerial photograph of a volcanic eruption

(a) State **two** ways in which a volcanic eruption can endanger human life.

(2)

1 .....

2 .....



(b) Describe **one** method that can be used to predict when a volcano is likely to erupt.

(2)

.....

.....

.....

.....

(c) Describe how people can prepare for **earthquakes**.

(4)

.....

.....

.....

.....

.....

.....

.....

.....

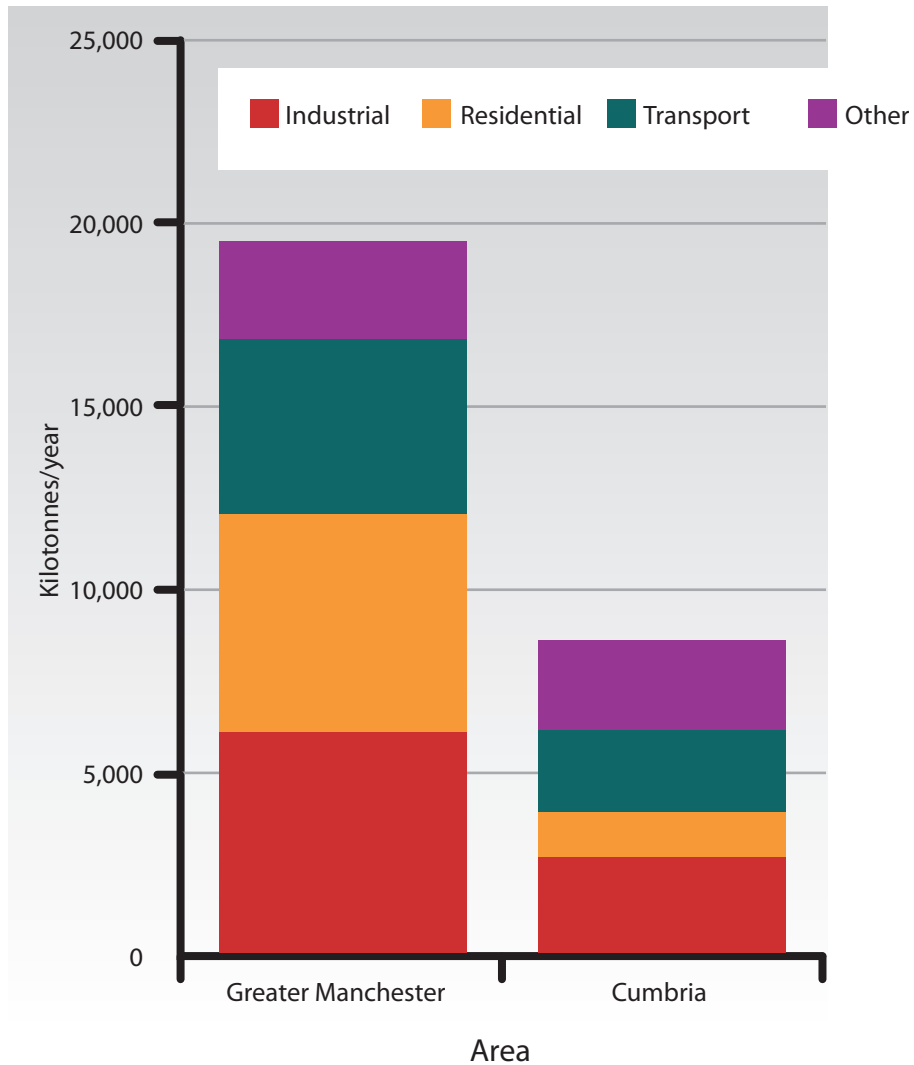
.....

**(Total for Question 1 = 8 marks)**



## Topic 2: Climate and Change

### 2 Study Figure 2.



**Figure 2 – Carbon dioxide emissions in selected areas of north-west England**

(a) Suggest **two** reasons why carbon dioxide emissions are higher in Greater Manchester than in Cumbria.

(2)

.....

.....

.....

.....



(b) Describe **one** way in which human activity is contributing to climate change.

(2)

.....

.....

.....

.....

(c) Describe how orbital changes and varying solar output can lead to climate change.

(4)

.....

.....

.....

.....

.....

.....

.....

.....

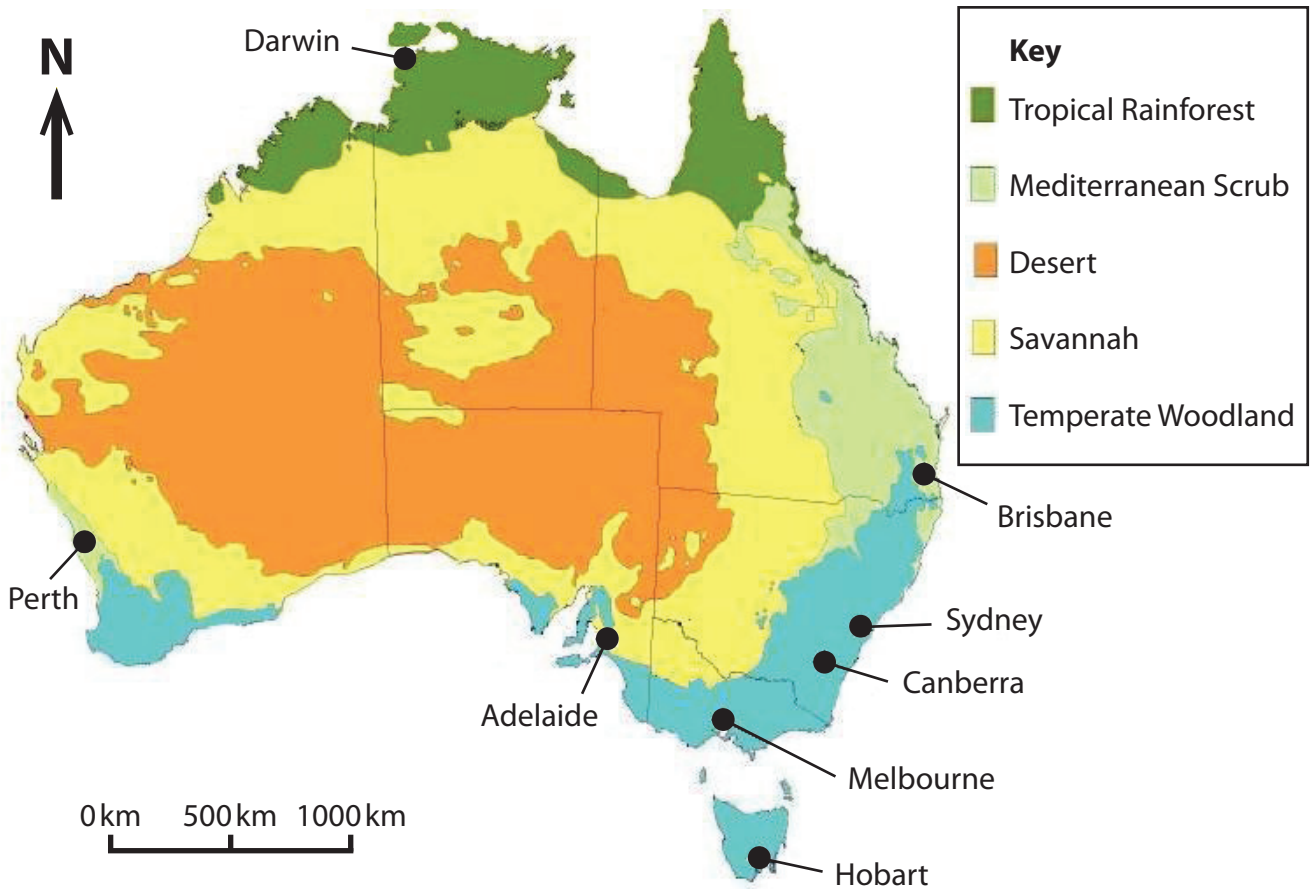
.....

**(Total for Question 2 = 8 marks)**



### Topic 3: Battle for the Biosphere

3 Study Figure 3.



**Figure 3 – Biome distribution in Australia**

(a) Describe the distribution of temperate woodland in Australia.

(2)

.....

.....

.....

.....



(b) For a named biome, describe **one** way it has been damaged by human activity.

(2)

Named biome: .....

.....

.....

.....

(c) Describe the management methods that can be used to conserve the biosphere.

(4)

.....

.....

.....

.....

.....

.....

.....

.....

.....

.....

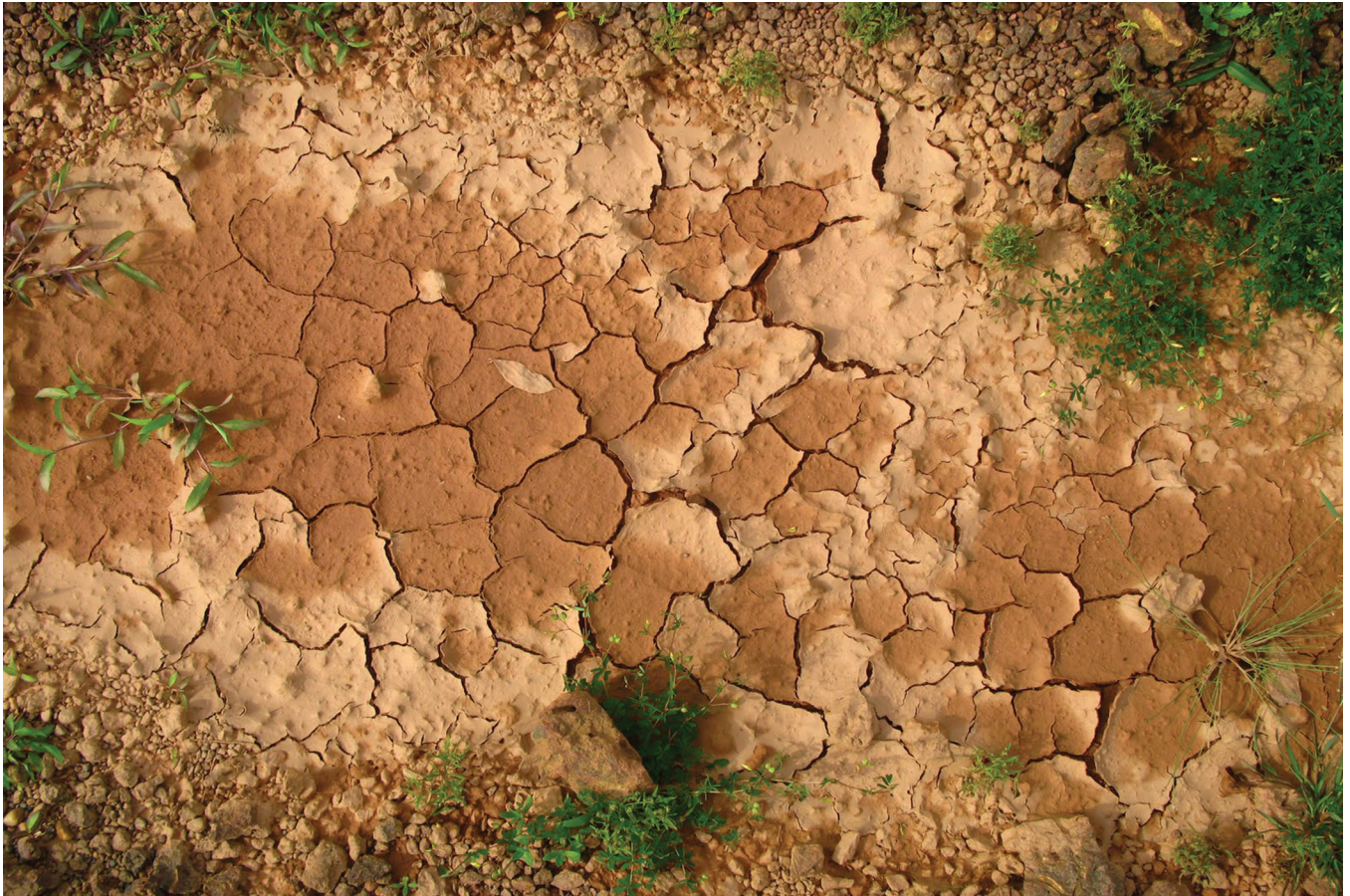
.....

**(Total for Question 3 = 8 marks)**



## Topic 4: Water World

### 4 Study Figure 4.



**Figure 4 – Photograph showing the impact of unreliable water supply**

(a) Outline why an **unreliable** water supply can cause problems for farmers.

(2)

.....

.....

.....

.....





(b) Describe **one** human activity that can lead to a reduction in water quality.

(2)

.....

.....

.....

.....

(c) For a named large-scale water management project, describe **one** cost and **one** benefit.

(4)

Named project .....

.....

.....

.....

.....

.....

.....

.....

.....

.....

.....

**(Total for Question 4 = 8 marks)**

---

**TOTAL FOR SECTION A = 32 MARKS**



**SECTION B – SMALL-SCALE DYNAMIC PLANET**

**Answer ONE question in this section.**

**Topic 5: Coastal Change and Conflict**

**If you answer Question 5 put a cross in this box  .**

**5** Study Figure 5.



**Figure 5 – Photograph of coastal landforms.**

(a) Explain how **one** landform shown in Figure 5 is likely to change in the future.

**(3)**

Chosen landform .....

.....

.....

.....

.....

.....

.....



\*(b) Using examples, explain the benefits of using **modern holistic** (wide ranging) approaches to coastal management.

(6)

.....

.....

.....

.....

.....

.....

.....

.....

.....

.....

.....

.....

.....

.....

.....

.....

.....

.....

.....

.....

.....

.....

.....

---

**(Total for Question 5 = 9 marks)**

---



**Topic 6: River Processes and Pressures**

If you answer Question 6 put a cross in this box  .

6 Study Figure 6.



**Figure 6 – Photograph of ‘High Force’ waterfall**

(a) Explain how the waterfall shown in Figure 6 is likely to change in the future.

(3)

.....

.....

.....

.....

.....

.....

.....



\*(b) Using examples, explain how human actions can result in an increased risk of flooding.

(6)

.....

.....

.....

.....

.....

.....

.....

.....

.....

.....

.....

.....

.....

.....

.....

.....

.....

.....

.....

.....

.....

**(Total for Question 6 = 9 marks)**

**TOTAL FOR SECTION B = 9 MARKS**



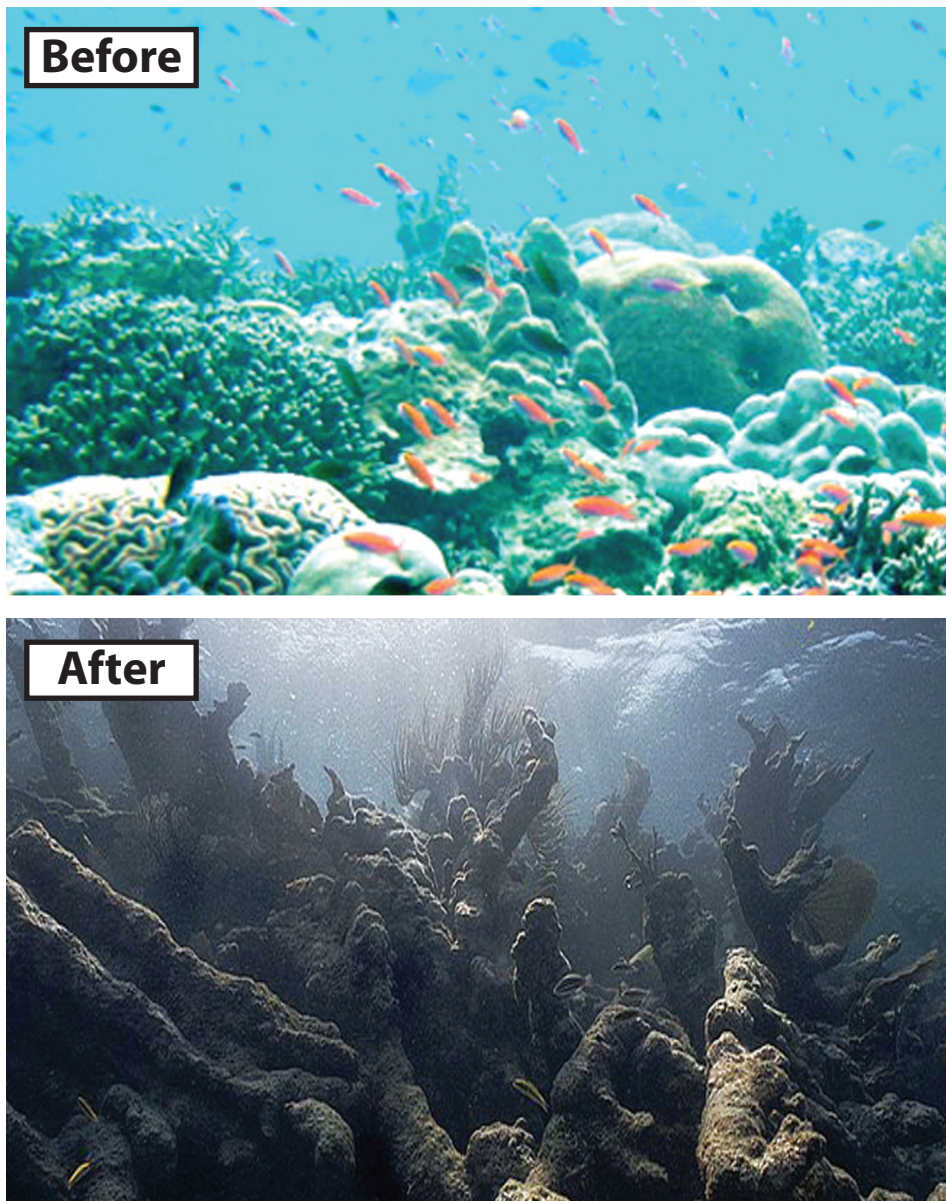
**SECTION C – LARGE-SCALE DYNAMIC PLANET**

**Answer ONE question in this section.**

**Topic 7: Oceans on the Edge**

**If you answer Question 7 put a cross in this box  .**

**7** Study Figure 7.



**Figure 7 – The impacts of pollution on a coral reef**



(a) Describe the changes caused by pollution on this coral reef.

(2)

.....  
.....  
.....  
.....

(b) Identify a global action taken to help maintain ocean health.

(1)

.....  
.....

\*(c) For a named marine ecosystem, explain why people may disagree about its management.

(6)

Named marine ecosystem: .....

.....  
.....  
.....  
.....  
.....  
.....  
.....  
.....  
.....  
.....  
.....  
.....  
.....  
.....  
.....

**(Total for Question 7 = 9 marks)**



## Topic 8: Extreme Climates

If you answer Question 8 put a cross in this box .

8 Study Figure 8.



Figure 8 – Buildings adapted to cope with extreme climates

(a) For **either** the hot arid **or** the polar climate, outline how the building has been designed to cope with the extreme climate.

(2)

Hot Arid or Polar: .....

.....

.....

.....

.....

(b) Identify **one** global action taken to help protect extreme environments.

(1)

.....

.....





\*(c) For a named area with **either** a hot arid **or** a polar climate, explain how life is changing for its peoples.

(6)

Named area: .....

.....  
.....  
.....  
.....  
.....  
.....  
.....  
.....  
.....  
.....  
.....  
.....  
.....  
.....  
.....

**(Total for Question 8 = 9 marks)**

---

**TOTAL FOR SECTION C = 9 MARKS**  
**TOTAL FOR PAPER = 50 MARKS**



**BLANK PAGE**



**BLANK PAGE**



**BLANK PAGE**

Every effort has been made to contact copyright holders to obtain their permission for the use of copyright material. Edexcel, a product of Pearson Education Ltd. will, if notified, be happy to rectify any errors or omission and include any such rectifications in future editions.

