

Write your name here

Surname

Other names

Centre Number

Candidate Number

**Edexcel GCSE**

# Geography B

## Unit 1: Dynamic Planet

**Higher Tier**

Tuesday 4 June 2013 – Afternoon

**Time: 1 hour**

Paper Reference

**5GB1H/01**

**You do not need any other materials.**

Total Marks

### Instructions

- Use **black** ink or ball-point pen.
- **Fill in the boxes** at the top of this page with your name, centre number and candidate number.
- In Section **A**, answer **ALL** the questions.
- In Section **B**, answer **either** question **5** or **6**.
- In Section **C**, answer **either** question **7** or **8**.
- Answer the questions in the spaces provided – *there may be more space than you need.*

### Information

- The total mark for this paper is 53.
- The marks for **each** question are shown in brackets – *use this as a guide as to how much time to spend on each question.*
- Questions labelled with an **asterisk** (\*) are ones where the quality of your written communication will be assessed
- The marks available for spelling, punctuation and grammar are clearly indicated.

### Advice

- Read each question carefully before you start to answer it.
- Keep an eye on the time.
- Check your answers if you have time at the end.

Turn over ►

P41373A

©2013 Pearson Education Ltd.

6/8/6/5/4



**PEARSON**

**SECTION A – INTRODUCTION TO THE DYNAMIC PLANET**

**Answer ALL questions.**

**Topic 1: Restless Earth**

**1** Study Figure 1.

**1000s feared dead in Japanese Quake**

Yesterday afternoon an earthquake measuring 9.0 on the Richter scale hit Japan. The earthquake was followed by a powerful tsunami. Ten metre high waves washed inland destroying entire towns.

Rescue services are struggling to cope, with access to the worst hit areas proving almost impossible. Fires are burning in several cities and a number of nuclear reactors have been damaged causing power shortages.

**Figure 1– An article about the Japanese Earthquake of 2011**

(a) Using Figure 1, state **two** reasons why Japanese rescue services were struggling to cope.

(2)

1 .....

2 .....



(b) Describe **one** way people can prepare for volcanic eruptions before they happen.

(2)

.....

.....

.....

.....

(c) Describe the differences between continental and oceanic crust.

(4)

.....

.....

.....

.....

.....

.....

.....

.....

.....

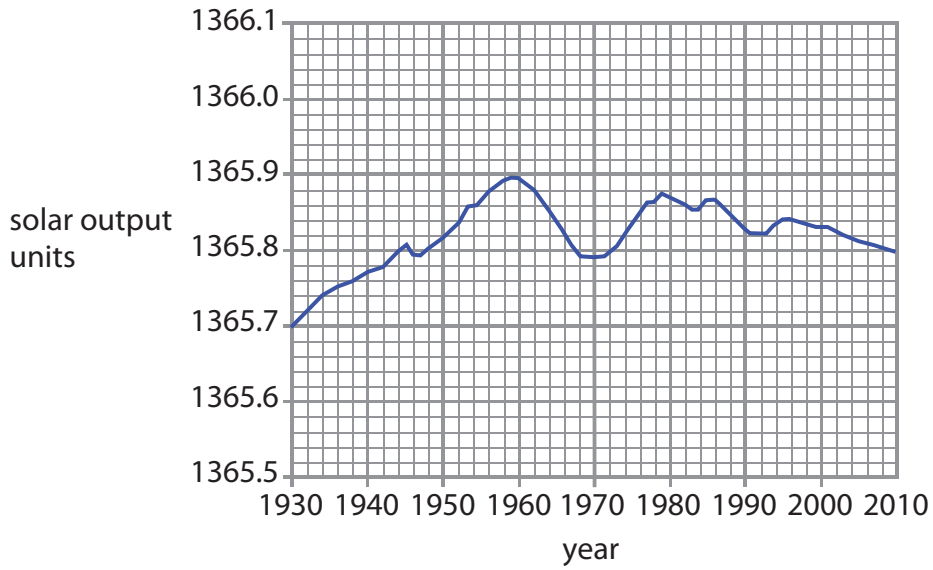
.....

**(Total for Question 1 = 8 marks)**



**Topic 2: Climate and Change**

2 Study Figure 2.



**Figure 2 – Changes in Solar Output, 1930 to 2010**

(a) Describe the changes in solar output which have occurred since 1930.

(3)

.....

.....

.....

.....

.....

.....



(b) Describe **one** possible **economic** impact of climate change in a named developing country.

(2)

Named developing country.....

.....

.....

.....

.....

(c) In the past, climate change has led to the disappearance of many animal and plant species.

Outline why periods of climate change in the past have led to these extinctions.

(3)

.....

.....

.....

.....

.....

.....

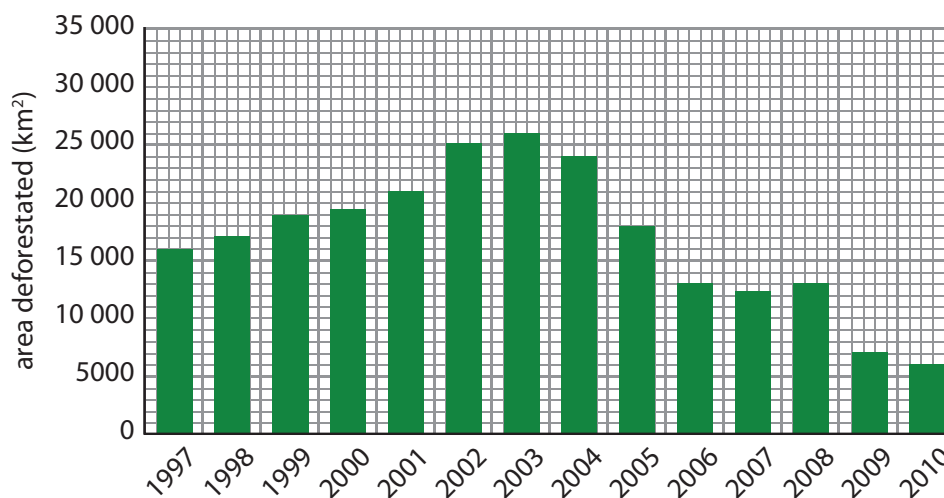
.....

**(Total for Question 2 = 8 marks)**



### Topic 3: Battle for the Biosphere

3 Study Figure 3.



**Figure 3 – Deforestation in the Brazilian Rainforest**

(a) (i) During which period did the area deforested rise by 4000 km<sup>2</sup>?

(1)

- A** Between 1999 and 2000
- B** Between 2004 and 2005
- C** Between 2001 and 2002
- D** Between 2007 and 2008

(ii) Identify a three-year period in which the amount of deforestation fell each year.

(1)



(b) Describe **one** management method that can be used to conserve the biosphere.

(2)

.....

.....

.....

.....

(c) Describe the biosphere's role in:

(4)

1. maintaining soil health

.....

.....

.....

.....

2. regulating the composition of the atmosphere.

.....

.....

.....

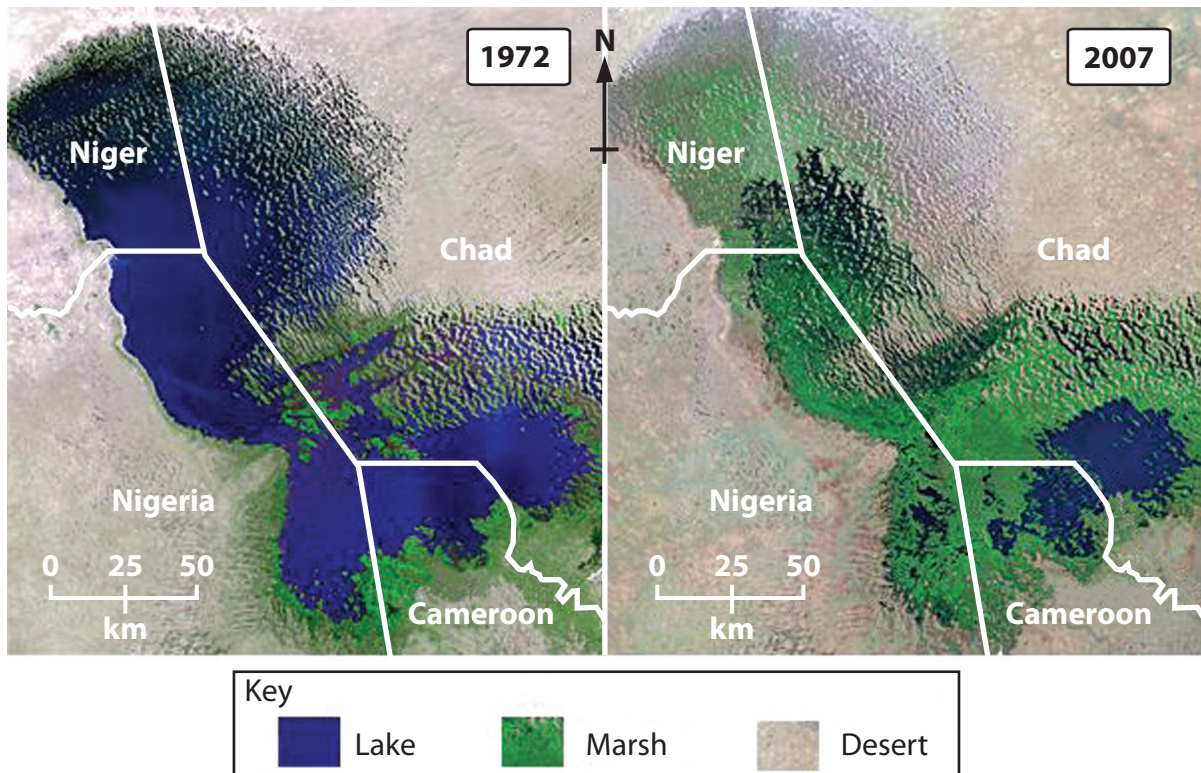
.....

**(Total for Question 3 = 8 marks)**



## Topic 4: Water World

### 4 Study Figure 4.



**Figure 4 – Satellite images of Lake Chad, West Africa, in 1972 and 2007**

- (a) (i) In 2007 what is the approximate area of the largest remaining section of Lake Chad? (1)
- A** 10 km<sup>2</sup>
  - B** 100 km<sup>2</sup>
  - C** 1000 km<sup>2</sup>
  - D** 10 000 km<sup>2</sup>
- (ii) Suggest **one** problem the shrinking of Lake Chad may have caused for local people. (1)





(b) Describe **one** benefit of a named large-scale water management project.

(2)

Named project .....

.....  
.....  
.....  
.....

(c) Describe **two** ways in which human activities can affect water **quality**.

(4)

1 .....

.....  
.....  
.....

2 .....

.....  
.....  
.....

**(Total for Question 4 = 8 marks)**

**TOTAL FOR SECTION A = 32 MARKS**



**SECTION B – SMALL-SCALE DYNAMIC PLANET**

**Answer ONE question in this section.**

**Topic 5: Coastal Change and Conflict**

**If you answer Question 5 put a cross in this box**

**5** Study Figure 5.



**Figure 5 – Photograph of Coastal Defences**

(a) Outline how this section of coast is protected from coastal erosion.

(3)

.....

.....

.....

.....

.....

.....



\* (b) Explain how longshore drift can lead to the formation of a coastal landform, such as a spit.

You may draw a diagram to help your answer.

(6)

.....

.....

.....

.....

.....

.....

.....

.....

.....

.....

.....

.....

.....

.....

.....

.....

.....

.....

.....

.....

.....

.....

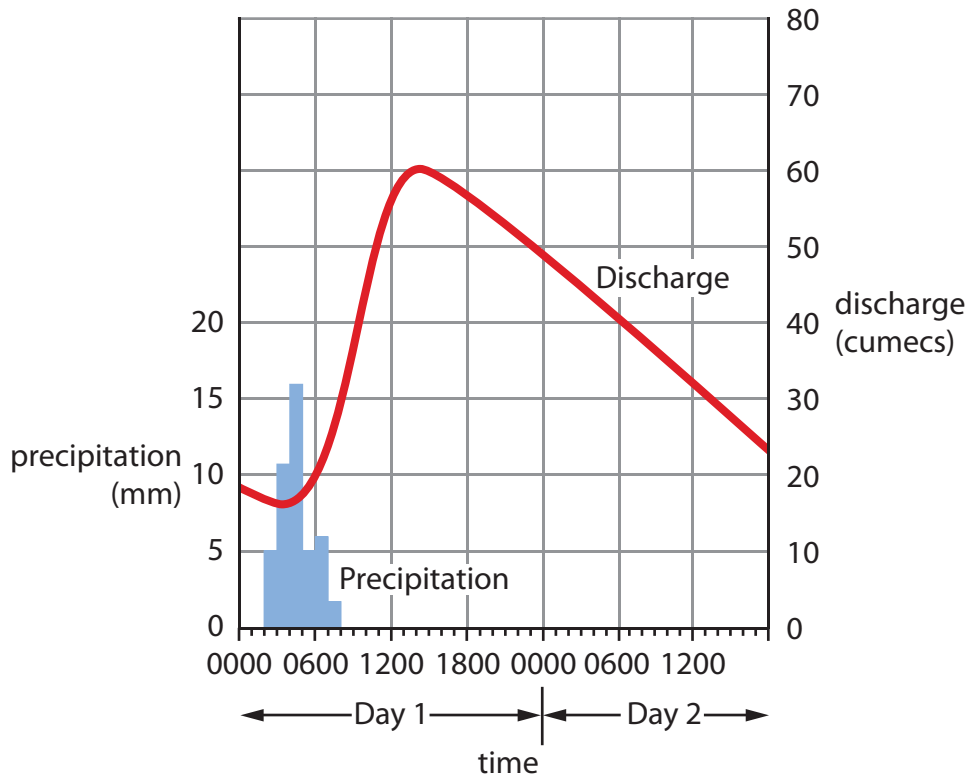
(Total for Question 5 = 9 marks)



**Topic 6: River Processes and Pressures**

If you answer Question 6 put a cross in this box

6 Study Figure 6.



**Figure 6 – A flood Hydrograph**

(a) Outline why the river's discharge changes during the time period shown.

(3)

.....

.....

.....

.....

.....

.....



\*(b) Explain how erosional processes can lead to the formation of a river landform, such as a waterfall.

You may draw a diagram to help your answer.

(6)

.....

.....

.....

.....

.....

.....

.....

.....

.....

.....

.....

.....

.....

.....

.....

.....

.....

.....

---

(Total for Question 6 = 9 marks)

---

**TOTAL FOR SECTION B = 9 MARKS**



**SECTION C – LARGE-SCALE DYNAMIC PLANET**

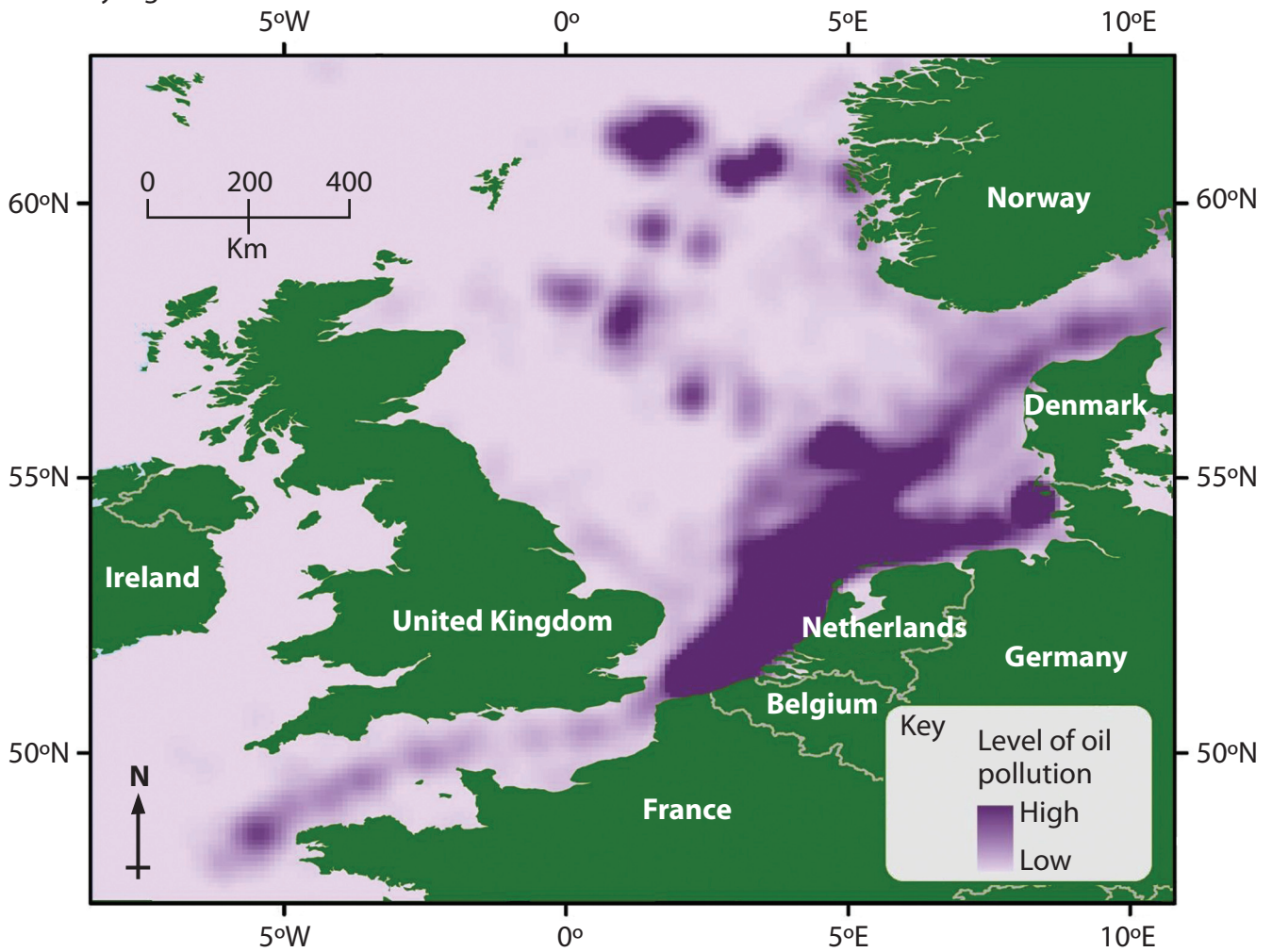
**Answer ONE question in this section.**

**Topic 7: Oceans on the Edge**

**If you answer Question 7 put a cross in this box**

**Spelling, punctuation and grammar will be assessed in \*(b).**

**7** Study Figure 7.



**Figure 7 – Levels of oil pollution in the seas around the UK**

(a) Describe the distribution of oil pollution in the seas shown.

(3)

.....

.....

.....

.....

.....

.....



\* (b) Using both **local** and **global** (international) examples, explain how marine ecosystems can be managed sustainably.

(6)

.....

.....

.....

.....

.....

.....

.....

.....

.....

.....

.....

.....

.....

.....

.....

.....

.....

.....

.....

.....

.....

.....

.....

.....

.....

.....

.....

.....

**(Total for spelling, punctuation and grammar = 3 marks)**  
**(Total for Question 7 = 12 marks)**

---

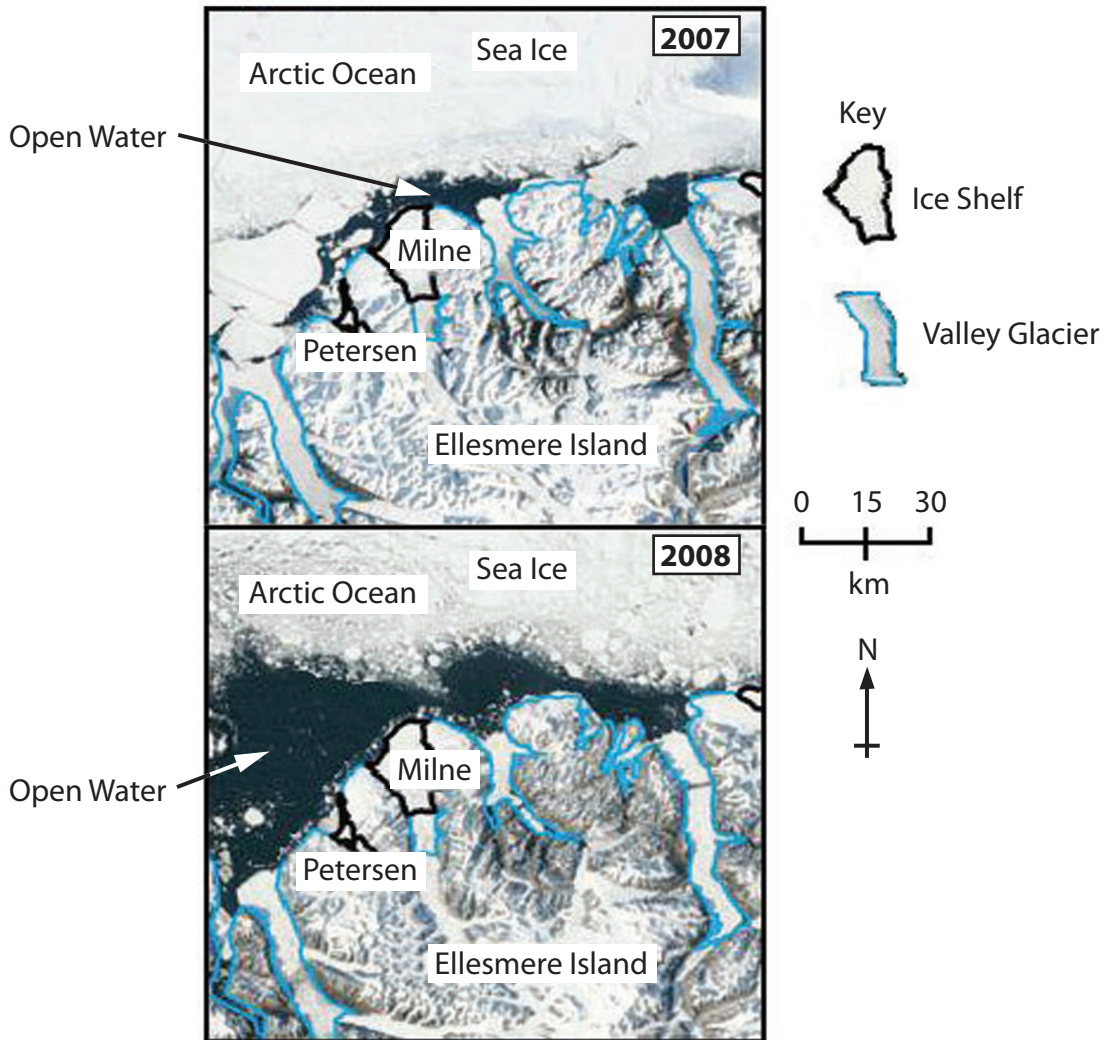


**Topic 8: Extreme Climates**

If you answer Question 8 put a cross in this box

Spelling, punctuation and grammar will be assessed in \*(b).

8 Study Figure 8.



**Figure 8 – Changes in the polar environment of Ellesmere Island, Northern Canada**

(a) Compare the extent of ice cover between 2007 and 2008.

(3)

.....

.....

.....

.....

.....

.....

.....





\*(b) For a named hot arid or polar region, explain why the lifestyle and culture of its peoples are under threat.

(6)

Named hot arid or polar region .....

.....

.....

.....

.....

.....

.....

.....

.....

.....

.....

.....

.....

.....

.....

.....

.....

.....

.....

.....

.....

**(Total for spelling, punctuation and grammar = 3 marks)**  
**(Total for Question 8 = 12 marks)**

---

**TOTAL FOR SECTION C = 12 MARKS**  
**TOTAL FOR PAPER = 53 MARKS**



**BLANK PAGE**



**BLANK PAGE**



**BLANK PAGE**

